

EXHIBIT A



US007151261B2

(12) **United States Patent**
Chai

(10) **Patent No.:** **US 7,151,261 B2**
(45) **Date of Patent:** **Dec. 19, 2006**

(54) **METHOD OF ENHANCING PERFORMANCE OF CERIUM DOPED LUTETIUM ORTHOSILICATE CRYSTALS AND CRYSTALS PRODUCED THEREBY**

(75) **Inventor:** **Bruce Chai, Sanford, FL (US)**

(73) **Assignee:** **Crystal Photonics, Incorporated, Sanford, FL (US)**

(*) **Notice:** Subject to any disclaimer, the term of this patent is extended or adjusted under 35 U.S.C. 154(b) by 378 days.

(21) **Appl. No.:** **10/754,238**

(22) **Filed:** **Jun. 9, 2004**

(65) **Prior Publication Data**
US 2005/0253072 A1 Nov. 17, 2005

(51) **Int. Cl.**
G01T 1/20 (2006.01)

(52) **U.S. Cl.** **250/362**

(58) **Field of Classification Search** **250/362**
See application file for complete search history.

(56) **References Cited**

U.S. PATENT DOCUMENTS

4,055,391 A	10/1977	Schmidt et al.	432/264
5,164,041 A	11/1992	Berkstresser et al.	156/617
5,324,488 A	6/1994	Klingshirn et al.	117/213
5,481,114 A	1/1996	Daniel et al.	250/390.11
5,483,070 A	1/1996	Valenta	250/366
5,540,947 A	7/1996	Morlotti et al.	427/65
5,660,627 A *	8/1997	Manente et al.	117/12
5,690,731 A	11/1997	Kurata et al.	117/13
6,323,489 B1	11/2001	McClellan	250/361 R
6,462,341 B1	10/2002	Muehlechner	250/363.03
6,624,420 B1	9/2003	Chai et al.	250/361 R

6,643,538 B1	11/2003	Majewski et al.	600/436
6,664,543 B1	12/2003	Moyers et al.	250/369
6,671,541 B1	12/2003	Bishop et al.	600/436
6,822,237 B1	11/2004	Inoue et al.	250/363.06
6,903,344 B1	6/2005	Breeding et al.	250/363.03
6,921,901 B1	7/2005	Chai et al.	250/361 R
6,995,374 B1 *	2/2006	Lefaucheur et al.	250/370.11
2002/0144640 A1	10/2002	Andreaco et al.	117/2
2004/0084655 A1 *	5/2004	Varruli et al.	252/301.4 R

OTHER PUBLICATIONS

"Crystal Growth and Optical Characterization of Cerium-Doped $\text{Lu}_{1-x}\text{Y}_x\text{SiO}_5$ ", Cooke et al., Journal of Applied Physics, American Institute of Physics, NY, US, vol. 88, No. 12, Dec. 15, 2000, pp. 7360-7362, XP012051142, ISSN: 0021-8979.

"High Efficiency of Lutetium Silicate Scintillators Ce-doped LPS and LYSO Crystals", Pidol et al., 2003 IEEE Nuclear Science Symposium and Medical Imaging Conference Record, New York, NY:IEEE, U.S. vol. 5 of 5, Oct. 19, 2003, pp. 886-890 Vol.12, XP010736350, ISBN: 0-7803-8257-9.

(Continued)

Primary Examiner—David Porta

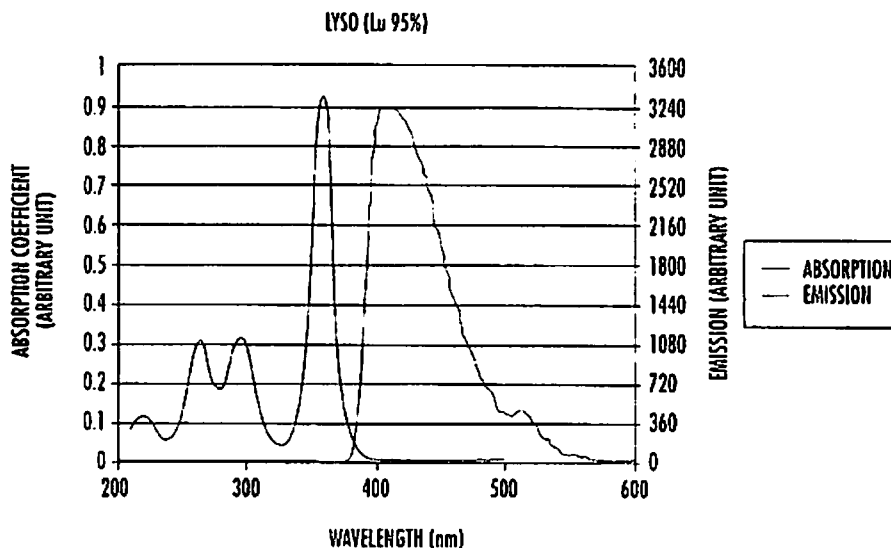
Assistant Examiner—Marcus Tanningco

(74) *Attorney, Agent, or Firm*—Allen, Dyer, Doppelt, Milbrath & Gilchrist, P.A.

(57) **ABSTRACT**

A method for enhancing the light yield of a single crystal of cerium doped lutetium orthosilicate (LSO) in response to irradiation with high energy radiation includes diffusing oxygen into the crystal by heating the crystal for a period of time in an ambient containing oxygen. This process of thermal oxygenation of the crystal effectively supplies oxygen to fill at least some of the oxygen vacancies in the body of monocrystalline LSO. A scintillation detector comprises a monocrystalline body of LSO enhanced by oxygen diffusion into the crystal.

28 Claims, 7 Drawing Sheets



US 7,151,261 B2

Page 2

OTHER PUBLICATIONS

Kobayashi et al., Abstract of "Radiation damage of cerium-doped lutetium oxyorthosilicate single crystal," Nuclear Instruments & Methods in Physics Research, Section A: Accelerators, Spectrometers, Detectors, and Associated Equipment (1993), 335 (3), 509-12.
Chen et al., Proceedings of the International Conference on Inorganic Scintillators and Their Applications, pp. 185-188, SCINT95, 1996, Delft University Press, The Netherlands.

Jermann et al., Proceedings of the International Conference on Inorganic Scintillators and Their Applications, pp. 388-391, SCINT95, 1996, Delft University Press, The Netherlands.

Higgins et al., The Influence of Whole Boule Annealing on the Properties of Semi-Insulating Indium Phosphide, Interdisciplinary

Research Centre for Semiconductor Materials, London, United Kingdom; presented at the Indium Phosphide and Related Materials (IPRM) Conference, Davos, Switzerland in May 1999.

"Investigation of the Properties of New Scintillator LYSO and Recent LSO Scintillators for Positron Emission Tomography (PET) Detectors". 2002 IEEE Nuclear Science Symposium Conference Record, 2002 IEEE Nuclear Science Symposium Conference, Norfolk, VA Nov. 10-16, 2002, IEEE Nuclear Science Symposium Conference Record, New York, NY, IEEE, US, vol. 3 of 3, Nov. 10, 2002, pp. 655-660, XP010663616, ISBN: 0-7803-7636-6.

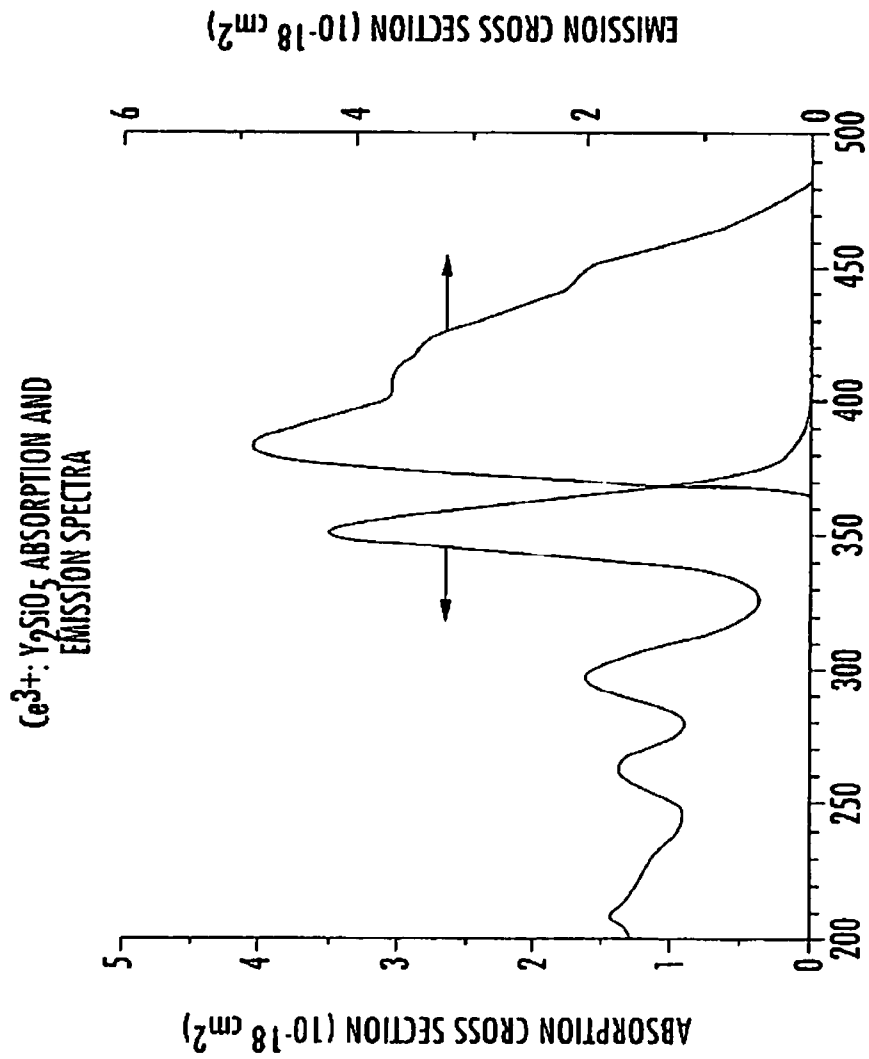
* cited by examiner

U.S. Patent

Dec. 19, 2006

Sheet 1 of 7

US 7,151,261 B2



WAVELENGTH (nm)
FIG. 1 (Y₂SiO₅)
(PRIOR ART)

U.S. Patent

Dec. 19, 2006

Sheet 2 of 7

US 7,151,261 B2

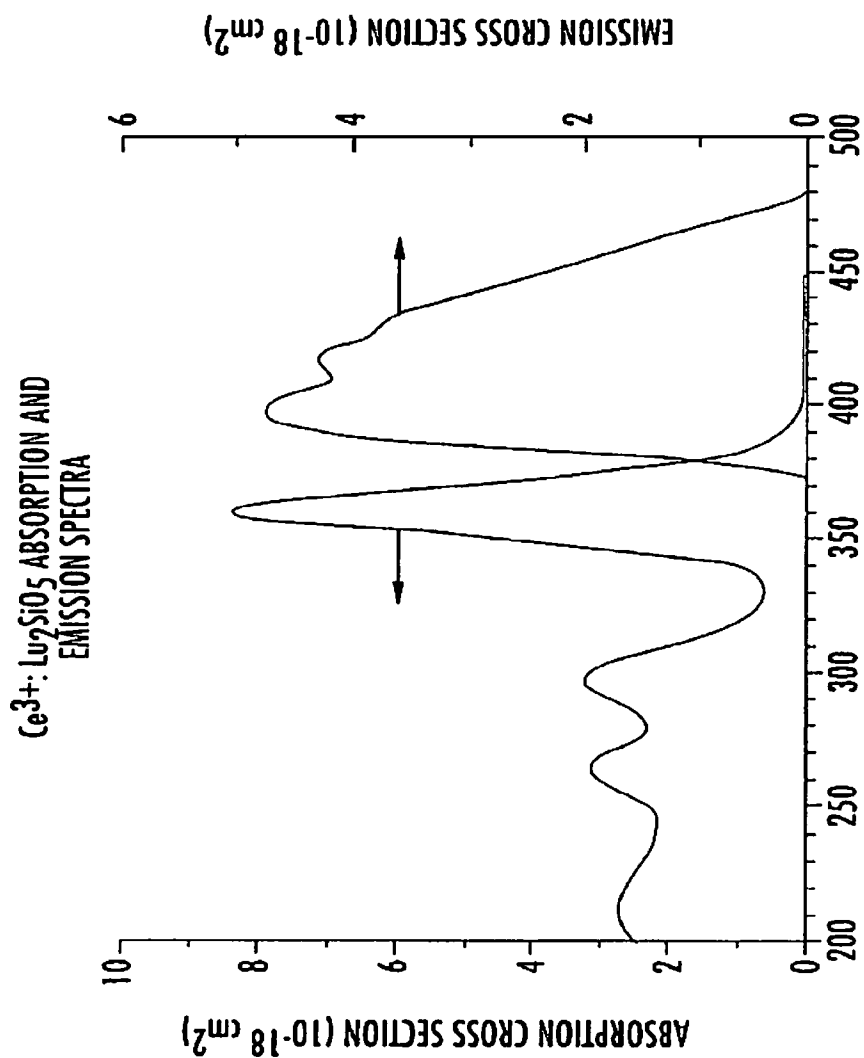


FIG. 2 (LSO)
(PRIOR ART)

U.S. Patent

Dec. 19, 2006

Sheet 3 of 7

US 7,151,261 B2

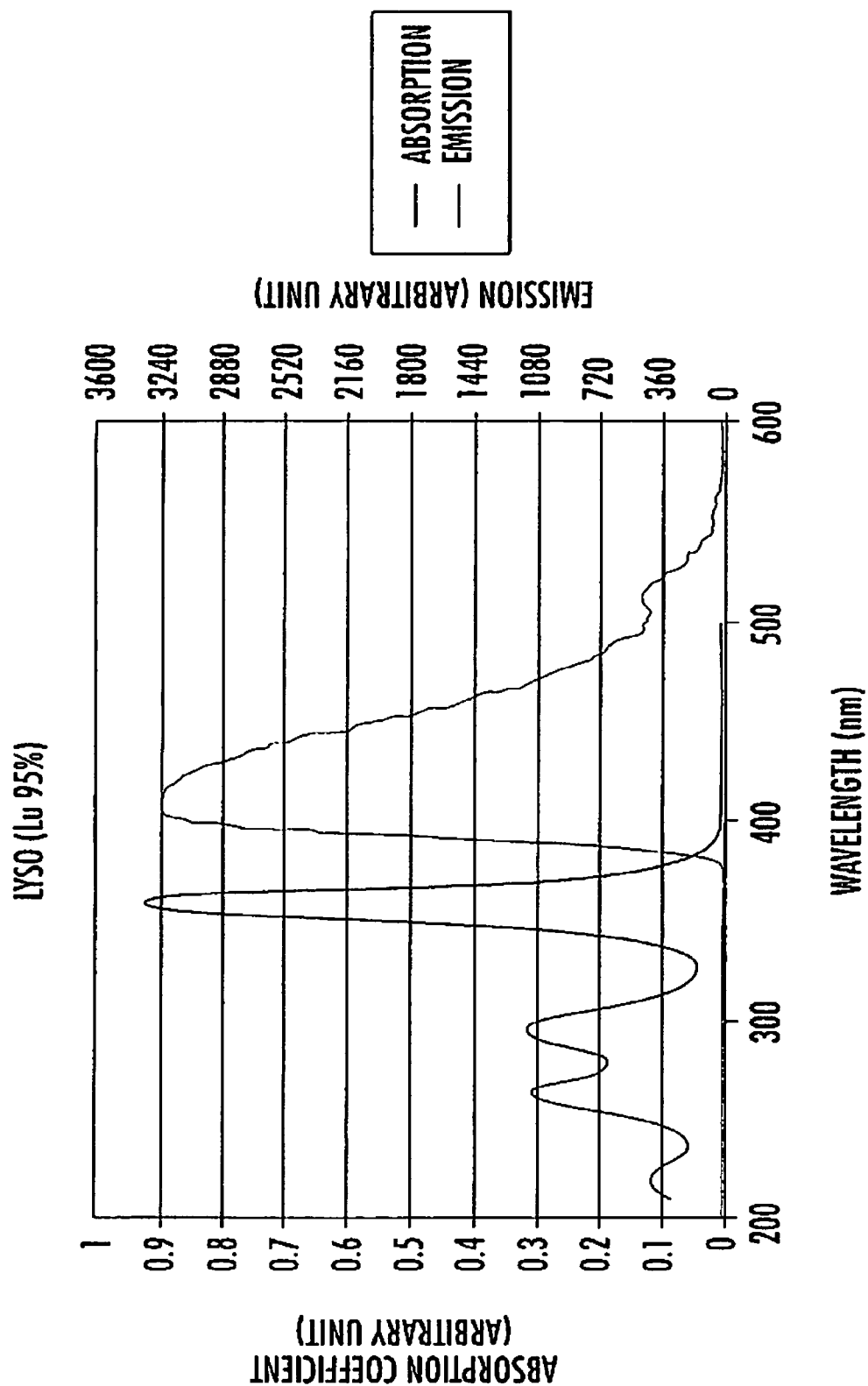


FIG. 3

U.S. Patent

Dec. 19, 2006

Sheet 4 of 7

US 7,151,261 B2

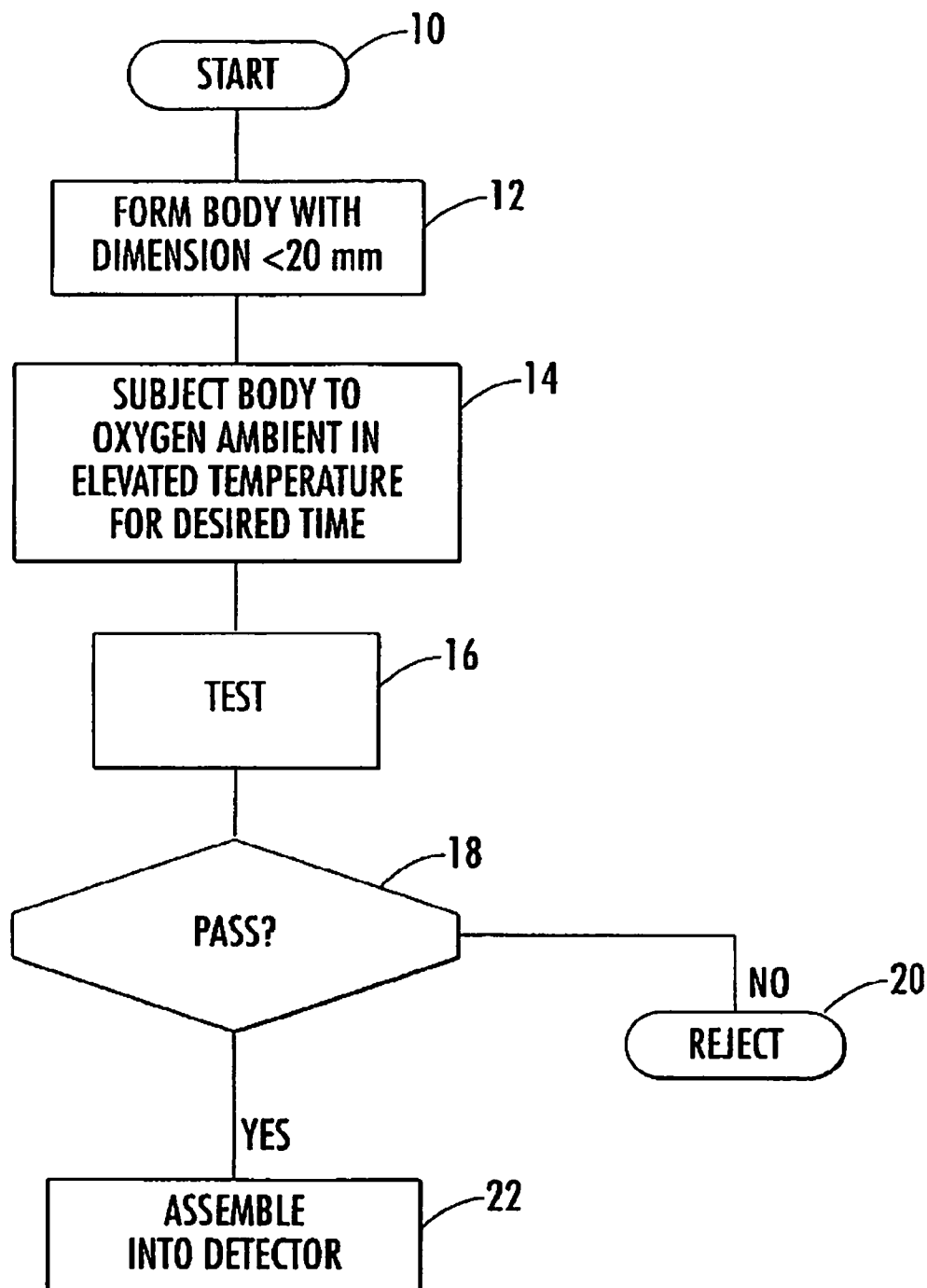


FIG. 4

U.S. Patent

Dec. 19, 2006

Sheet 5 of 7

US 7,151,261 B2

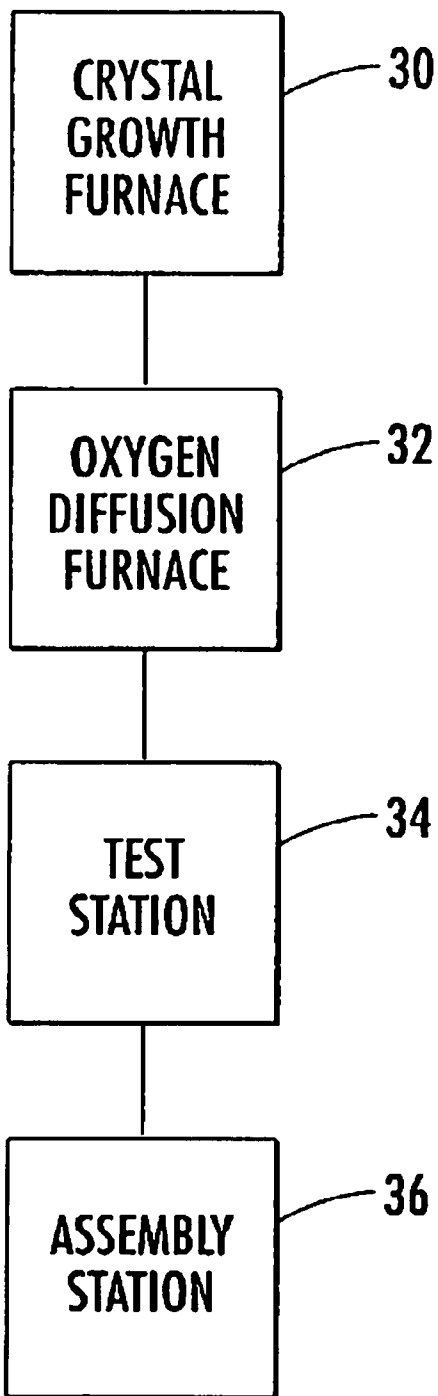


FIG. 5

U.S. Patent

Dec. 19, 2006

Sheet 6 of 7

US 7,151,261 B2

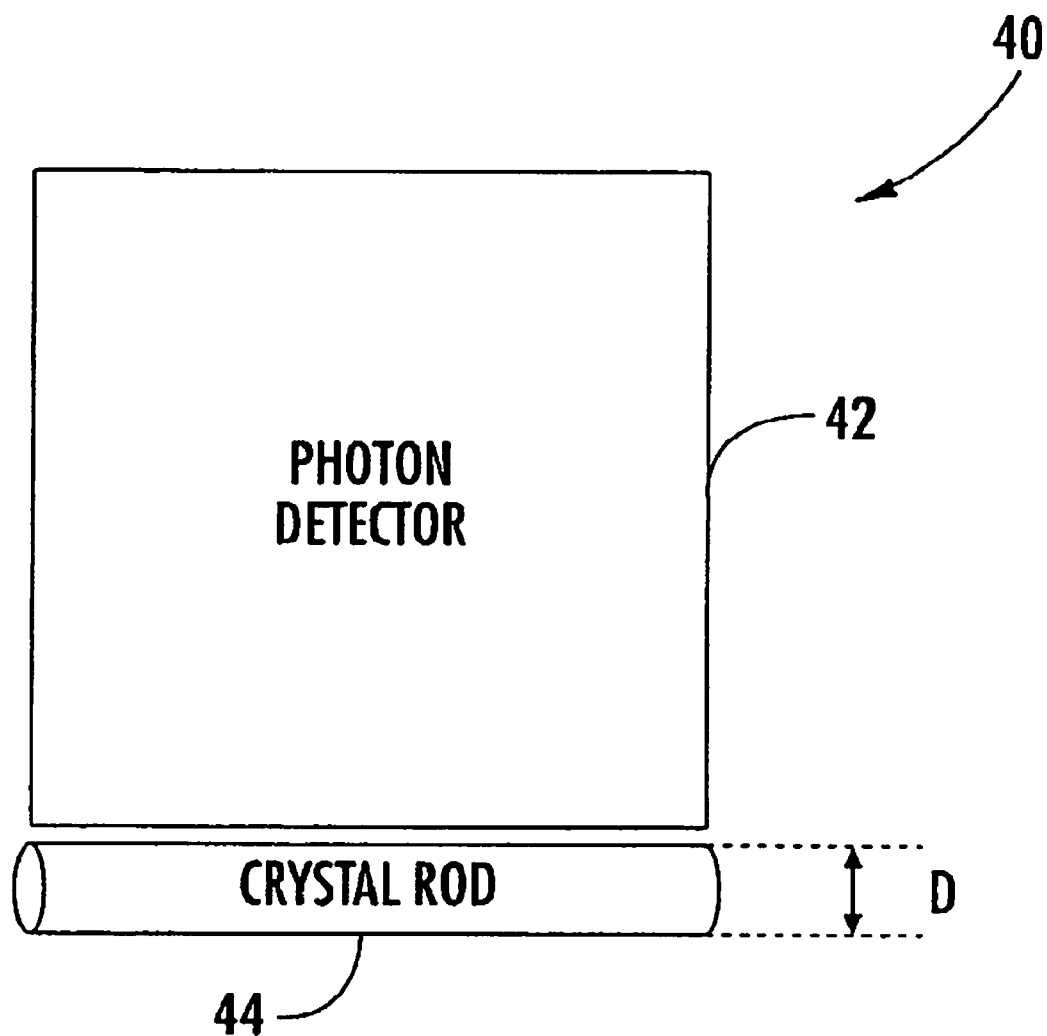


FIG. 6

U.S. Patent

Dec. 19, 2006

Sheet 7 of 7

US 7,151,261 B2

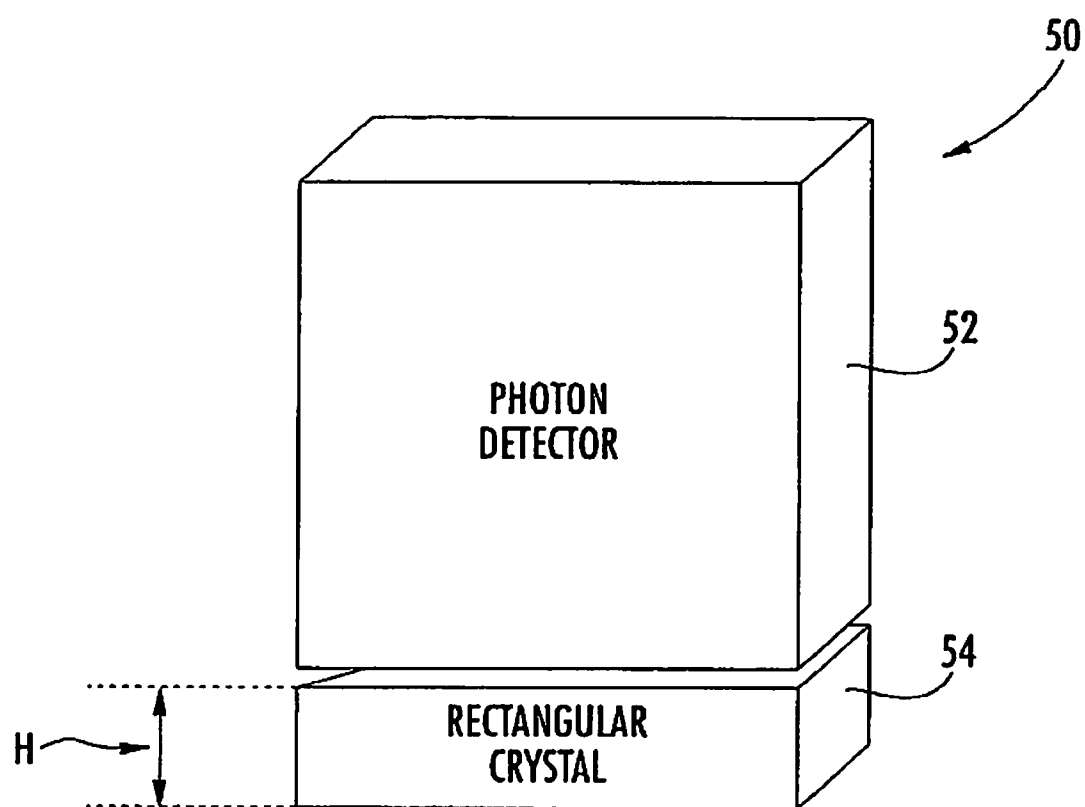


FIG. 7

US 7,151,261 B2

1

METHOD OF ENHANCING PERFORMANCE OF CERIUM DOPED LUTETIUM ORTHOSILICATE CRYSTALS AND CRYSTALS PRODUCED THEREBY

FIELD OF THE INVENTION

The present invention relates to the field of crystals and, more particularly, to a method of enhancing a crystal of cerium doped lutetium orthosilicate (LSO) to generate a greater light yield in response to irradiation with high energy radiation.

BACKGROUND OF THE INVENTION

Single crystal scintillation is a very simple but also very sensitive method of detecting high energy radiation such as x-rays, gamma-rays and high energy particles with energies exceeding a few kilo-electron volt (KeV). In the past century, a large number of crystals have been proposed for potential scintillating applications. For medical imaging such as positron emission tomographs (PET), crystals with the highest light yield, narrowest energy resolution and fastest decay time are required. Moreover, PET also requires a crystal with good physical integrity and chemical inertness. Thallium-activated sodium iodide, NaI(Tl) has by far the highest light yield of 38,000 photons per million-electron volt (MeV). Unfortunately, NaI(Tl) is hygroscopic which is not a desirable property in making the small detector pixels used in a PET system.

The first crystal used in a PET application was bismuth germanate (BGO), which has the general formula $\text{Bi}_4\text{Ge}_3\text{O}_{12}$. BGO is non-hygroscopic and has good physical properties. The problem of BGO is the relatively low light yield of 6,000 photons per MeV, or approximately 15% of the yield of NaI(Tl). BGO also has a long decay time of 300 nano-seconds (ns), which is too slow for the coincident detection employed in a PET system.

A much improved crystal for PET application was developed in the early 1980s. This is cerium doped gadolinium orthosilicate (GSO), which has the general formula $\text{Ce:Gd}_2\text{SiO}_5$. GSO exhibits the much shorter decay time of 60 ns and a light yield of approximately 10,000 photons per MeV, or 25% that of NaI(Tl).

In the early 1990s, cerium doped lutetium orthosilicate (LSO), having the general formula of $\text{Ce:Lu}_2\text{SiO}_5$, was discovered. LSO had, by far, the best overall properties. The decay time of LSO is only 47 ns and the light yield is 29,000 photons per MeV, or approximately 76% that of NaI(Tl). Even though LSO has excellent properties, it is not without problems. One of the most serious problems of LSO is the large variation of light yield from crystal boule to crystal boule and even from top to bottom within the same crystal boule. In the past, this variation has been attributed to impurities within the crystal, which generate color centers and thus quench the radiative emission.

More recently, Chai et al. in U.S. Pat. No. 6,624,420 described the newest entry in scintillator crystals for PET, that is lutetium yttrium orthosilicate (LYSO) having the general composition of $\text{Ce}_{2x}(\text{Lu}_{1-x}\text{Y}_x)_2\text{SiO}_5$ where $x=0.00001$ to 0.05 and $y=0.0001$ to 0.9999. LYSO also has very high light yield up to 96% that of NaI(Tl) and a similar fast decay time of 48 ns. At the same time, however, it also suffers the same problem as LSO, that is, a large light yield variation from crystal boule to crystal boule, as well as from the top to the bottom of the same crystal boule, although the variation is much smaller than that of LSO. The inventors

2

attributed the smaller variation in light yield properties of LYSO to the substitution of yttrium, which has much higher purity than the lutetium source.

A large variation in light yield presents a serious problem for the construction of PET detector blocks. Ideally, it is preferred that all pixels within a detector block have the same light yield and energy resolution. Moreover, the spread of the light, or energy resolution is another important parameter in the design of the PET detector blocks. Ideally, it is preferable to have the energy resolution as narrow as possible. At the present time, neither BGO nor GSO suffers from the problem of non-uniformity in light yield and energy resolution. However, for both LSO and LYSO, these are persistent problems.

In the past, in order to provide PET detector blocks using either LSO or LYSO and having uniform performance, it would be necessary to carefully measure the light yield performance and energy resolution of each individual detector pixel. By manually selecting the pixels with nearly the same performance, it would be possible to build detector blocks having uniform performance. This is a very costly manufacturing process, however. To make the product competitive, it became necessary to develop a process which could eliminate this manual selection process and still identify all the detector pixels having the same performance.

Applicant believes, without wishing to be bound thereto, that the poor light yield performance of LSO is due to deep traps which take the energy away and dissipate it non-radiatively. However, very little is known about the exact nature of these non-radiative recombination centers. Since the starting material, Lu_2O_3 , is only 99.95% in purity, it is believed that poor light yield performance was due to the impurities in the starting material from which the crystal is made. However, repeated chemical analyses of trace elements in both the Lu_2O_3 powder starting material and the whole crystal have failed to identify the exact impurity which quenches the light yield. Applicant has also intentionally added trace amounts of impurities in the starting powder mixture and then grown a LSO or LYSO crystal, but this approach failed to show any of the intended results of light quenching.

Even though both LSO and LYSO have the problem of serious light yield variation, Applicant has not found the same effect in cerium doped yttrium orthosilicate single crystal (YSO) having the general formula $\text{Ce:Y}_2\text{SiO}_5$. Moreover, while LSO has a strong afterglow which can last many hours after being radiated with UV light, Applicant has never observed a similar afterglow of YSO under the same UV radiation conditions. Since the starting material, Y_2O_3 , for YSO is 99.999% in purity, the evidence tended to support the speculation that the light yield variation is due to the impurity of the Lu_2O_3 raw material.

In the development of the LYSO crystal, Applicant has also noticed the enhancement of light yield shown by LYSO over LSO, as well as much weaker afterglow for LYSO crystals with high yttrium content. At that time, this observation also supported the assumption that a high yttrium content LYSO crystal starts with less Lu_2O_3 and, therefore, has less impurities and thus better light yield.

Despite the seeming consistency of this pattern as indicating that impurities in the Lu_2O_3 raw material were the main cause of light yield reduction, the impurity or impurities which interfere with light yield has never been identified, even though Applicant has used a variety of Lu_2O_3 sources from many different vendors having different types and levels of impurities. In fact, the performance of both LSO and LYSO seems to be independent of the source of

US 7,151,261 B2

3

Lu_2O_3 . Even when the same batch of chemical is used, it is still possible to have a large variation in light yield from crystal boule to crystal boule. Given those circumstances, Applicant began to suspect that the cause of light yield variation is not really due to the impurity effect but due to other causes which are more fundamental and most likely related to the basic structure of the crystal.

YSO, LSO and LYSO have the same crystal structure, which is monoclinic with a space group of C2/c. The structure has two distinct rare earth cation sites. One is a distorted 7-fold coordinate site and the other one is a smaller distorted 6-fold coordinate site. These two sites are quite different from each other, with distinct energy levels for emission. When the crystal is doped with cerium, the dopant substitutes into both sites. The exact distribution ratio between the two sites is not known. However, since the emission spectra of Ce:LSO (FIG. 1) and Ce:YSO (FIG. 2) are not quite the same, it may be assumed that the Ce distribution between the two sites is different for Ce:LSO and Ce:YSO. For Ce:LYSO, because the crystal has a very high content of Lutetium (at least approximately 95%) and low Yttrium content (approximately less than 5%) the absorption and emission spectra are substantially the same as that of pure LSO.

Single crystals of YSO, LSO and LYSO are all produced by the Czochralski melt pulling technique as known in the art, since all three compositions melt congruently. However, the melting points of all three crystals are quite high, 1980° C., 2150° C. and 2100° C., respectively. To hold the molten charges at such high temperatures, it is necessary to use an iridium metal crucible as the container, which has a melting point of 2450° C. Even though iridium is quite inert and stable, it does oxidize in air at such high temperatures. To prevent metal loss of the iridium crucible, it is necessary to grow the crystals in either a vacuum or in furnaces purged with argon or nitrogen gas, so that the ambient oxygen in the growth chamber is kept below approximately 1%.

Even though the crystals grown in this method are colorless and transparent, Applicant theorizes without wishing to be bound thereto that there is some evidence that oxide crystals produced at such high temperatures under a low oxygen condition tension can generate oxygen vacancy point defect centers. These point defect centers could act as recombination centers which take away the radiative energy from an otherwise normal electron-hole recombination process. Even though such oxygen point defect centers are well known, they have not been implicated directly as the possible cause for low light yield in scintillating crystals.

During Applicant's extensive experience growing crystals of LSO, YSO and LYSO over the years, there have been a number of times that accidentally an air leakage developed in a growth chamber. This was highly undesirable, since the iridium crucible was badly burned to a purplish black color. The crystal surface, in those instances, was covered with small single crystal flakes of iridium metal released from the crucible. Generally, the process must be stopped right away to minimize further damage to the crucible and to the furnaces. In most of these cases a partially completed crystal is the result.

In these cases, however, even though LSO, YSO and LYSO all have the same crystallographic structure, the crystals produced under such highly oxygenated conditions are quite different from each other. For YSO, the crystal turns into a light yellow color, indicating oxidation of Ce from the 3+ to the 4+ state. Nevertheless, there is improvement of the light yield in these oxygenated crystals as compared with the regular YSO crystals.

4

For both LSO and LYSO crystals, the change from colorless to yellow is rarely seen. Most of these crystals are still transparent and colorless, but among these crystals, I noticed a definite improvement in light yield. When grown using the prior process of reduced oxygen, the typical light yield for an LSO crystal is about 4x that of BGO, but occasionally a crystal having 5x BGO light yield may be obtained, although rarely. Surprisingly, however, Applicant discovered that these accidentally air-leaked LSO crystals generally showed 5x or even better light yield over BGO, which is exceptionally good. For LYSO crystals, the results were even better. It was possible to obtain as much as 6x or more the light yield of BGO. Moreover, the improvement appeared to be independent of the source of Lu_2O_3 . In other words, Applicant theorizes without wishing to be bound thereto that the improvement is unrelated to the degree of original impurities found in the crystal, or to the reduction thereof.

SUMMARY OF THE INVENTION

In view of the foregoing background, it is therefore an object of the present invention to enhance the performance of LSO crystals.

This and other objects, features and advantages in accordance with the present invention are provided by a method comprising diffusing oxygen into a body of monocrystalline LSO by heating the body for a period of time in an ambient containing oxygen. The diffusing may be carried out so that the body of monocrystalline LSO is fully oxygenated, for example. In addition, the diffusing may be carried out so that the cerium is not further oxidized to a 4+ state. If a sufficient amount of cerium is oxidized the monocrystalline body may appear yellow in color, and, moreover, the performance may be adversely affected.

The method may also comprise forming the body of monocrystalline LSO to have at least one dimension no greater than about 20 mm. This may permit more efficient diffusion to thereby reduce production time. The body may have a rod shape or be rectangular, for example.

The oxygen containing ambient may, in some embodiments, comprise air at atmospheric pressure. In other embodiments, the oxygen containing ambient may be at a pressure above atmospheric. The oxygen containing ambient may also have an oxygen concentration higher than in air.

The heating the body of monocrystalline LSO may comprise heating the body to a temperature in a range of between approximately 1100° to 1400° C., and, more preferably to a temperature in a range of between about 1200° to 1300° C. The period of time is in a range of approximately 30 to 120 hours, and, more preferably, in a range of about 50 to 80 hours.

Prior to being enhanced, the LSO single crystal may consist of $\text{Ce:Lu}_2\text{SiO}_5 \cdot z$ where z ranges from greater than 0 to less than 5.0.

The diffusing may result in increased performance based upon an energy resolution of the body of monocrystalline LSO. Alternatively or additionally, the diffusing may result in increased performance based upon an energy resolution of the body of monocrystalline LSO. Similarly, the diffusing may result in increased performance based upon a full width, half maximum (FWHM) of an energy peak of the monocrystalline LSO.

Considered in somewhat different terms, the method may be for enhancing performance of a body of monocrystalline cerium doped lutetium orthosilicate (LSO) in response to irradiation with high energy radiation, and wherein the body

US 7,151,261 B2

5

of monocrystalline LSO having oxygen vacancies therein. The method may comprise supplying oxygen to fill at least some of the oxygen vacancies in the body of monocrystalline LSO.

Another aspect of the invention is directed to a scintillation detector. The detector may include a monocrystalline body having the general formula of $\text{Ce:Lu}_2\text{SiO}_{5-z}$ where z is approximately zero. In addition, the monocrystalline body may also have a light yield of greater than approximately 462 channels. Alternately or additionally, the monocrystalline body may also have a full width, half maximum (FWHM) of an energy peak of the monocrystalline LSO of not greater than approximately 34 channels. The monocrystalline body may also have an energy resolution of not greater than approximately 10%. The scintillation detector may also include a photon detector coupled to the monocrystalline body.

BRIEF DESCRIPTION OF THE DRAWINGS

FIG. 1 is a line graph showing the absorption and emission spectra of YSO, as in the prior art.

FIG. 2 shows a line graph depicting the absorption and emission spectra of LSO, as in the prior art.

FIG. 3 is a line graph showing the absorption and emission spectra of LYSO, as in the prior art.

FIG. 4 is a flow diagram showing the method of the invention.

FIG. 5 illustrates an overall industrial process employing the present invention.

FIG. 6 is a schematic diagram of a scintillation detector employing a rod-shaped crystal enhanced according to the invention.

FIG. 7 shows a schematic diagram of a scintillation detector employing a rectangular crystal enhanced according to the invention.

DETAILED DESCRIPTION OF THE PREFERRED EMBODIMENTS

The present invention will now be described more fully hereinafter with reference to the accompanying drawings, in which preferred embodiments of the invention are shown. Unless otherwise defined, technical and scientific terms used herein have the same meaning as commonly understood by one of ordinary skill in the art to which this invention pertains. Although methods and materials similar or equivalent to those described herein can be used in the practice or testing of the present invention, suitable methods and materials are described below. All publications, patent applications, patents, and other references mentioned herein are incorporated by reference in their entirety. In case of conflict, the present specification, including any definitions, will control. In addition, the materials, methods and examples given are illustrative in nature only and not intended to be limiting. Accordingly, this invention may be embodied in many different forms and should not be construed as limited to the illustrated embodiments set forth herein. Rather, these illustrated embodiments are provided solely for exemplary purposes so that this disclosure will be thorough and complete, and will fully convey the scope of the invention to those skilled in the art. Other features and advantages of the invention will be apparent from the following detailed description, and from the claims.

For illustrative purposes, a representative embodiment of the invention is described hereafter in the context of the detection of high energy gamma rays. It should be under-

6

stood that the oxygenated LSO single crystal scintillator of the invention is not limited to the detection of gamma ray radiation but it has general applications for the detection of other types of radiation such as x-rays, cosmic and other high energy particle rays.

In the background review, it is noted that Ce doped LYSO has superior scintillating properties among known non-hygroscopic scintillators. It also includes its two end members, YSO where $y=1.00$ and LSO where $y=0.00$. A previously recognized problem with this family of compounds is the large variation of the light yield from crystal to crystal and even from top to bottom in the same crystal boule. It now appears that these variations are not primarily due to impurities within the crystal but, rather, are related to the oxygenation state of the material. Crystals that are highly oxygenated usually produce a much higher light yield than crystals having oxygen vacancies within their structure.

The present invention includes a process which can oxygenate the crystal and thus greatly improve its light yield performance. These crystals are produced by the Czochralski melt pulling technique known in the art, using an iridium crucible at extremely high temperatures which are near or exceed 2000°C . Therefore, in order to prevent excessive oxidation and corrosion of the iridium crucible, it is typically desired to reduce the content of oxygen within the growth chamber. All crystals typically produced through this prior art technique are made under low oxygen conditions. As a result, based on experimental observations Applicant theorizes without wishing to be bound thereto, that these conventionally produced crystals are formed having oxygen vacancy point defects within the crystal lattice. Unfortunately, this oxygen defect condition has been previously overlooked by those of skill in this art. Applicant believes this problem has not been recognized before because crystals having oxygen vacancy defects are visually unremarkable, that is, there is no visual clue that there may be something about the crystal that is less than optimal. Since the traditional concept of the impurity effect on crystal performance is deeply rooted in the art, and the Lu_2O_3 starting chemicals are not completely pure, it was easy to assume that impurities are the primary cause of the reduction in the light yield produced by these crystals. Thus, the problem and its solution continued unrecognized until now.

Having realized that low light yield in these crystals may be directly related to oxygen vacancy defects in the crystal, it became necessary to develop a process for producing crystals without the defect. It was also clear that increasing the oxygen concentration during formation of the crystals may lead to damage of the iridium crucible due to uncontrolled oxidation at the high temperatures used for crystal formation.

Thus, the present invention provides a method of oxygenating these crystals, to reduce or eliminate the oxygen vacancy point defects and to restore the intrinsic light yield characteristics of YSO, LSO and LYSO crystals. Since the oxygenation process requires adding oxygen into the crystal structure without destroying the crystal itself, it was determined that thermal diffusion might provide a suitable approach.

One should clearly differentiate between thermal annealing and thermal oxygenation processes, even though the basic tool to achieve both effects may be similar. Thermal annealing is a heat treatment process normally used in removing the stress within a crystal or to homogenize the physical or chemical properties of a crystal. Only thermal energy is needed for the process. Thermal annealing can be performed in air, in a vacuum, or in an inert gas, and

US 7,151,261 B2

7

regardless of the atmosphere there is no difference in the result since there is no chemical change induced within the crystal. A thermal oxygenation process, on the other hand, requires both thermal energy as well as the availability of oxygen. In essence, it is a thermal diffusion of oxygen into the crystal so as to eliminate the oxygen vacancy. Since oxygen is a fairly large molecule, under normal conditions it would not be possible to diffuse oxygen into the crystal structure. Therefore, to improve the diffusion process, heat is applied to the crystal to a certain temperature so that the atoms within the crystal structure are in a highly agitated state, which also increases the spacing of the atoms within the crystal lattice. This increased spacing in the crystal will also facilitate the diffusion of oxygen into the structure. So, in the thermal oxygenation process small amounts of oxygen are added to the crystal by diffusion. Since the diffusion of oxygen into the crystal is a very slow process, it would be of advantage to speed up the oxygenation. One approach would be to require at least one of the dimensions of the crystal to be small. In other words, the crystal is best shaped as a rod or a plate, and preferably should have the smallest dimension being no greater than 10 mm. For thicker samples, the total time needed for oxygenation may be too long to be practical for commercial use.

It is possible to increase the temperature to facilitate the oxygenation process, however, increasing the temperature

8

(FWHM) of the energy peak again in unit of number of channels. For example, the LYSO secondary standard has a 10% energy resolution, and the FWHM of this standard is 55 channels. Before starting the measurement of crystal samples, the machine is first calibrated with the LYSO standard and adjusted so that the gain of the PMT will read exactly 550 channels. The MCA is then ready to read other test samples.

The following experimental examples have been conducted using the thermal oxygenation process on a variety of crystals prepared by the Czochralski melt pulling technique as known in the art. While a large number of sample crystals have now been treated according to the method of the invention, the examples provided below are representative.

EXAMPLE 1

A Ce:LYSO crystal having $y=0.05$ was cut into pixels of approximately $4 \times 6 \times 30$ mm, resulting in ten individual samples which were then placed in an oven heated to 1100°C . for a period of 60 hours. The light yield (LY), the FWHM of the energy peak and energy resolution (ER %) before and after this thermal oxygenation process are listed in Table 1. It should also be understood that all test results shown in Tables 1-9 were measured at standard room temperature of approximately 25°C .

TABLE 1

	Sample #									
	1	2	3	4	5	6	7	8	9	10
Initial LY	661	657	666	651	639	603	672	618	668	638
FWHM	115	117	79	102	77	75	82	82	81	62
ER (%)	17.4	17.8	11.9	15.7	12.1	12.4	12.2	13.3	12.1	9.7
60 hrs LY	691	722	715	729	723	705	717	709	727	723
FWHM	61	63	64	66	61	54	60	62	61	62
ER (%)	8.8	8.7	9.0	9.1	8.4	7.7	8.4	8.7	8.4	8.6

also increases the risk of oxidizing the Ce ion in the crystal from a $3+$ charge state to a $4+$. When this occurs, the crystal turns a yellow color. Also, in the more highly oxidized state the Ce^{4+} is no longer an emitting ion. Thus, the light yield of the crystal will be reduced as the total number of the emitting ions is reduced.

In testing the crystals produced, the light yield and energy resolution are measured using a standard photomultiplier tube (PMT) detector in a multi-channel analyzer (MCA). The sample to be measured is placed on the PMT detector and covered with a high reflectivity cup. On top of the cup, there is a radioactive source which will generate gamma rays. The typical radioactive sources used are Sodium²² (²²Na), which produces 511 KeV gamma rays, and Cesium (¹³⁷Cs), which produces 630 KeV gamma rays. The light yield and energy resolution are measured in the units of number of channels of the MCA. For calibration, NaI(Tl) and BGO are used as primary standards and then a calibrated sample of LYSO is used as a secondary standard. The detector system is set up in such a way that the maximum light output peak of BGO is set at 100 channels. Using this as the primary standard, the secondary LYSO standard will have the maximum light output peak located at 550 channels. In other words, the secondary standard light yield is 5.5 times more than that of BGO.

The MCA can also measure the energy spread around the maximum peak. It measures the full width half maximum

The results show a general increase of LY following thermal oxygenation. More importantly, the energy resolution improves dramatically after treatment.

EXAMPLE 2

A Ce:LSO crystal with $y=0.00$ is cut into $6 \times 6 \times 25$ mm³ pixels and the samples are placed in an oven heated to 1100°C . for a period of 60 hours. The results are shown in Table 2. The initial pixel light yield is quite low, around 300, and the energy resolution is also poor. After thermal oxygenation, however, the pixel light yield has doubled and shifted to 600. The samples still retained their original light yield peak and the LY became doubled-peaked with an energy resolution more than twice of the original. It was apparent that the same oxygenation treatment is insufficient for LSO, when compared to LYSO. In view of the first results, it was decided to treat the samples for an additional 60 hours at 1100°C . Following this second treatment, there is a clear improvement for both light yield performance and energy resolution. However, the double peak has not been totally eliminated, and three of the samples show two distinctly separated peaks.

US 7,151,261 B2

9

10

EXAMPLE 4

TABLE 2

	Sample #								
	1	2	3	4	5	6	7	8	9
Initial LY	281	231	286	313	313	252	324	286	328
FWHM	38	37	54	46	44	40	71	52	61
ER (%)	13.5	16.0	18.9	14.7	14.1	15.9	21.9	18.2	18.6
60 hrs LY	601	614	591	614	616	609	621	573	608
FWHM	133	172	163	136	114	142	128	168	119
ER (%)	22.1	28.0	27.6	22.1	18.5	23.3	20.6	29.3	19.6
120 hrs LY	652	664	dbl	dbl	675	663	691	dbl	675
FWHM	116	144	—	—	105	120	106	—	107
ER (%)	17.8	21.7	—	—	15.6	18.1	15.3	—	15.9

These results show that even though thermal oxygenation can greatly improve the light yield of pure LSO ($y=0$) crystal, the structure being less open, it is more difficult to achieve full oxygenation as compared with LYSO.

EXAMPLE 3

A Ce:YSO crystal with $y=1.00$ was cut into a small block of $6 \times 6 \times 10 \text{ mm}^3$ and placed in an oven heated to 1100°C . for a period of 60 hours. The pixel has an initial light yield of 397 and an energy resolution of 10.6%. After the thermal oxygenation process, the crystal color turned to a light yellow, indicating conversion of at least part of the Ce dopant from the $3+$ state to the $4+$ state. Ce^{3+} is an efficient blue emitter whereas Ce^{4+} does not emit at all. Light yield measurement showed that the energy peak was located at 452, which is better than before treatment, and that post-treatment energy resolution is 10.0%. While thermal oxygenation does improve the light yield in this case, the improvement is more limited. It also seems that the oxygen diffusion is more easily obtained in YSO than LYSO, with concomitant oxidation of the cerium dopant. These results indicated a need for shortening the treatment time to prevent oxidation of cerium in this crystal.

A thick Ce:LYSO crystal slab with $y=0.05$ and dimensions of 20 mm thick by 85 mm in diameter was treated in an oven heated to 1100°C . for a period of 60 hours. The slab had an initial light yield of 385 and FWHM of 52. After treatment, the crystal shows a double peak at 390 and 680. It is thought that this effect is due to the limited diffusion depth of the oxygen so that only the outer skin region of the crystal is oxygenated, whereas the interior portion of the crystal still has original material with oxygen vacancies. This result indicates that pure thermal annealing will not change the light yield of the crystal. The interior portion of the crystal has undergone the same amount of heating but there is no detectable change in properties. Since the thermal oxygenation was not completed for the slab, the sample was placed back in the oven heated at 1100°C . for another 60 hours. Unfortunately, even after the second annealing, clear double peaks remain. This result led to the conclusion that since oxygen diffusion into the crystal is slow, it is difficult to oxygenate the interior of the sample when the crystal is too thick.

EXAMPLE 5

Temperature dependence of thermal oxygenation of Ce:LSO and Ce:LYSO crystals is tested using a special high temperature furnace capable of reaching a temperature of up to 1600°C . in air. Three sets of five identical pixels each, measuring $6 \times 6 \times 25 \text{ mm}^3$, were taken from a Ce:LSO crystal having $y=0.00$ and a Ce:LYSO crystal having $y=0.05$. These three sets were placed in furnaces and heated simultaneously, one set at 1400°C . for 30 hours, one set at 1300°C . for 50 hours, and one set at 1200°C . for 80 hours, respectively. The parameters for each pixel were measured before and after this thermal oxygenation treatment. The results are listed below:

TABLE 3

At 1400°C . (Ln = LSO pixels, LYn = LYSO pixels, n = 1 to 5)

	Sample #									
	L1	L2	L3	L4	L5	LY1	LY2	LY3	LY4	LY5
Initial LY	403	338	353	415	349	510	455	465	484	485
FWHM	43.5	42.0	42.6	44.3	68.0	47.1	54.0	45.6	47.7	46.5
ER (%)	10.8	12.4	12.1	10.7	19.5	9.2	11.9	9.8	9.9	9.6
30 hrs LY	615	613	615	607	579	585	595	606	602	606
FWHM	57.5	61.3	57.6	63.9	64.2	48.1	48.6	45.7	48.1	45.1
ER (%)	9.3	10.0	9.4	10.5	11.1	8.2	8.2	7.5	8.0	7.4

TABLE 4

At 1300°C . (Ln = LSO pixels, LYn = LYSO pixels, n = 6 to 10)

	Sample #									
	L6	L7	L8	L9	L10	LY6	LY7	LY8	LY9	LY10
Initial LY	413	412	378	389	318	451	490	485	467	486
FWHM	41.9	45.2	42.2	42.1	40.3	44.0	47.0	48.5	46.2	46.9
ER (%)	10.1	11.0	11.2	10.8	12.7	9.8	9.6	10.0	9.9	9.7
50 hrs LY	627	618	605	617	641	623	620	635	633	629

US 7,151,261 B2

11

12

TABLE 4-continued

At 1300° C. (Ln = LSO pixels, LYn = LYSO pixels, n = 6 to 10)										
Sample #										
	L6	L7	L8	L9	L10	LY6	LY7	LY8	LY9	LY10
FWHM	81.0	87.8	85.5	81.3	67.2	49.4	48.9	46.6	48.2	46.3
ER (%)	12.9	14.2	14.1	13.2	10.5	7.9	7.9	7.3	7.6	7.4

TABLE 5

At 1200° C. (Ln = LSO pixels, LYn = LYSO pixels, n = 11 to 15)										
Sample #										
	L11	L12	L13	L14	L15	LY11	LY12	LY13	LY14	LY15
Initial LY	309	357	418	372	328	476	507	454	480	467
FWHM	34.9	40.5	45.2	42.8	67.7	49.2	48.1	46.0	46.6	46.9
ER (%)	11.3	11.3	10.8	11.5	20.6	10.3	9.5	10.1	9.7	10.0
80 hrs LY	541	578	598	554	557	599	600	614	614	610
FWHM	97.5	96.8	107.7	104.8	100.0	46.7	46.9	45.7	47.6	44.3
ER (%)	18.0	16.7	18.0	18.9	18.0	7.8	7.8	7.4	7.8	7.3

25

It is clear from the result that oxygen diffusion is far more effective at higher temperatures. Between Ce:LSO and Ce:LYSO, the latter is much easier to be fully oxygenated during a much shorter treatment time. At 1400° C., it is possible to fully oxygenate both Ce:LSO and Ce:LYSO in 30 hours. After full oxygenation, there is great improvement in light yield (LY) and energy resolution (ER %) for both crystals. Moreover, even though the as-grown Ce:LYSO has distinctly better light yield and energy resolution as compared with Ce:LSO, once fully oxygenated there is substantially no difference in light yield between these two crystals. However, the overall energy resolution of Ce:LYSO is distinctly better than that of Ce:LSO, even when both are fully oxygenated. Still, for Ce:LSO, the energy resolution is also greatly improved after thermal oxygenation. For example, Sample L5 with initial LY of 349 and ER 19.5% can be improved to LY of 579 and ER 11.1% with full oxygenation.

EXAMPLE 6

Using the same high temperature furnace as in Example 5, we investigate the complete range of composition of YSO, LYSO and LSO family compounds. Pixels made from seven specific compositions were used for the thermal oxygenation test. They are pure YSO (y=1.00), LYSO with 15% Lu (y=0.85), LYSO with 30% Lu (y=0.70), LYSO with 50% Lu (y=0.50), LYSO with 70% Lu (y=0.30), LYSO with 85% Lu (y=0.15) and pure LSO (y=0.00). All pixels with the smallest dimensions no less than 6 mm. The thermal oxygenation temperatures and durations are 1400° C. for 30 hours, 1300° C. for 50 hours, 1200° C. for 80 hours and 1100° C. for 120 hours, respectively in order to compare the result in Example 5. Each pixel was measured before and after the thermal oxygenation. The results are listed below:

TABLE 6

At 1400° C. (YSO, LSO = pure compound, n % LY = % of Lu content in LYSO)								
Sample #	YSO ₁	YSO ₂	15%	30%	50%	70%	85%	LSO
Initial LY	386	506	232	407	469	387	449	320
FWHM	29.6	41.7	45.1	35.8	47.2	35.7	57.4	39.3
ER (%)	7.7	8.2	19.4	8.8	10.1	9.2	12.8	12.3
30 hrs LY	408	448	348	549	570	607	644	657
FWHM	31.3	35.9	54.0	41.4	44.3	46.9	48.3	57.0
ER (%)	7.7	8.0	15.5	7.5	7.8	7.7	7.5	8.7

TABLE 7

At 1300° C. (YSO, LSO = pure compound, n % LY = % of Lu content in LYSO)								
Sample #	YSO ₁	YSO ₂	15%	30%	50%	70%	85%	LSO
Initial LY	447	453	233	430	466	450	462	398
FWHM	34.5	35.5	45.1	44.7	52.1	53.6	68.3	45.7
ER (%)	7.7	7.8	19.4	10.4	11.2	11.9	14.8	11.5
30 hrs LY	460	464	352	566	586	625	636	628
FWHM	35.8	31.9	36.2	41.9	51.1	46.8	46.9	87.4
ER (%)	7.8	6.9	10.3	7.4	8.7	7.5	7.4	13.9

TABLE 8

At 1200° C. (YSO, LSO = pure compound, n % LY = % of Lu content in LYSO)								
Sample #	YSO-1	YSO-2	15%	30%	50%	70%	85%	LSO
Initial LY	498	412	262	477	520	542	473	420
FWHM	37.5	36.7	33.3	46.4	54.8	61.1	57.5	69.9
ER (%)	7.5	8.9	12.7	9.7	10.5	11.3	12.2	16.6
30 hrs LY	459	422	361	579	604	625	644	623
FWHM	31.2	35.2	39.9	36.6	44.3	44.6	50.6	97.8
ER (%)	6.8	8.3	11.1	6.3	7.3	7.1	7.9	15.7

US 7,151,261 B2

13

14

TABLE 9

At 1100° C. (YSO, LSO = pure compound, n % LY = % of Lu content in LYSO)										
Sample #	YSO ₁	YSO ₂	15%	30%	50%	70% ₁	70% ₂	85% ₁	85% ₂	LSO
Initial LY	441	453	250	473	512	525	520	442	500	384
FWHM	33.0	35.3	36.3	42.3	54.8	65.1	48.3	46.3	49.8	84.0
ER (%)	7.5	7.8	14.5	8.9	10.7	12.4	9.3	10.5	10.0	21.9
30 hrs LY	490	466	349	582	621	618	646	646	671	607
FWHM	31.3	32.0	44.9	40.1	48.8	49.7	47.5	47.7	46.4	102.3
ER (%)	6.4	6.9	12.9	6.9	7.9	8.0	7.4	7.5	6.9	16.9

For pure LSO pixel, the result is the same as those in Example 5. Only at 1400° C., it is possible to fully oxygenate LSO. At lower temperature, the light yield improves but the energy resolution increases. For pure YSO, the result is consistent with Example 3. All the YSO pixels turn to light yellow in color at all temperatures after thermal oxygenation indicating the oxidation of Ce³⁺ to Ce⁴⁺. However, despite the loss of active emission center of Ce³⁺ there seems no significant decrease in light yield nor change in energy resolution (ER). For LYSO pixels, the result is also very consistent. All the pixels shows no sign of any discoloration, even for 15% LYSO at 1400° C. The 15% LYSO which has the highest yttrium content of 85% starts with very poor light yield and energy resolution, there is a 50% improvement in light yield after thermal oxygenation. The energy resolution improves except at the highest temperature. For the rest of the LYSO composition, the thermal oxygenation is completed at all temperatures. All samples shows increase in light yields and decrease in energy resolution. Moreover, there is a systematic increase in final light yield with increase in Lutetium content in the crystal.

Thermal oxygenation at 1300° C. and 1200° C. show that Ce:LYSO pixels are fully oxygenated during the respective heating time, but Ce:LSO pixels are far from reaching full oxygenation. This is consistent with the thermal treatment result at 1100° C. and indicates that the active energy of oxygen diffusion for Ce:LSO is much higher than that for Ce:LYSO, so that much longer time are needed to fully oxygenate Ce:LSO. However, once fully oxygenated, the Ce:LSO pixels are functionally close to Ce:LYSO with only slightly higher energy resolution.

Applicant hypothesizes, without wishing to be bound thereto, that the large difference in response during thermal oxygenation shows the effect of the crystal's physical properties, that is, comparing Ce:LSO with Ce:LYSO. Applicant has found that with as small as approximately 1% content of Yttrium in Ce:LYSO, the crystal will show significant improvement in oxygen diffusion, as well as a narrowing of the energy resolution as compared to that of pure Ce:LSO. This is feature distinguishes pure Ce:LSO from Ce:LYSO. Ease of oxygenation increases with increasing yttrium content in Ce:LYSO. At the same time, however, the tendency to oxidize Ce from 3+ state to 4+ state also increases with higher yttrium content. It is necessary to carefully control both the time and temperature during thermal oxygenation of a specific crystal composition in order to maximize light yield from the crystal without further oxidizing the Ce component in the crystal.

EXAMPLE 7

We also examine the effect of thermal oxygenation on the light yield of Ce:LSO and Ce:LYSO as a function of

temperature. We randomly select two Ce:LSO pixels and two Ce:LYSO (y=0.05) pixels. One of each is as-grown without thermal oxygenation. The other two are fully oxygenated Ce:LSO and Ce:LYSO. The sample is chilled or heated at different temperatures. Both light yield and energy resolution are measured at these temperatures. The result is shown in Table 10.

TABLE 10

Temperature Dependence of Light Yield Measurement:					
Sample	Centroid	FWHM	Energy R	T (° C.)	Δ
BGO	100	11.45	11.45	23	
LSO (untreated)	486	50.57	10.4	2	100
LSO (untreated)	462	51.77	11.2	23	95.1
LSO (untreated)	452	37.96	8.4	41	93.0
LSO (untreated)	420	31.16	7.4	56	86.4
LSO (oxygenated)	685	48.93	7.1	2	100
LSO (oxygenated)	665	42.50	6.4	23	97.1
LSO (oxygenated)	676	49.18	7.3	41	98.7
LSO (oxygenated)	658	37.49	5.7	56	96.1
LYSO (untreated)	521	32.91	6.3	2	100
LYSO (untreated)	465	35.43	7.6	23	89.3
LYSO (untreated)	447	25.57	5.7	41	85.8
LYSO (untreated)	376	42.61	11.3	56	72.2
LYSO (oxygenated)	708	47.26	6.7	2	100
LYSO (oxygenated)	701	50.07	7.1	23	99.0
LYSO (oxygenated)	692	42.97	6.2	41	97.7
LYSO (oxygenated)	678	41.53	6.1	56	95.8

Crystal performance was measured at four temperatures: 2°, 23°, 41° and 56°, respectively. It was found that both as-grown Ce:LSO and Ce:LYSO has defect centers due to oxygen deficiency. These defect centers can act as non-radiative emission centers which will take the scintillating energy away from emission. The efficiency of such non-radiative energy removal increases with temperature. For Ce:LSO, there is a drop of 14% in light yield from 2° to 56° C. For Ce:LYSO with easier oxygen diffusion, the drop is doubled to 28% at the same temperature range. However, after the thermal oxygenation, these oxygen deficient defects are eliminated. Both Ce:LSO and Ce:LYSO shows the same low temperature dependence of light yield of only 4% at the same temperature range.

The result shows that thermal oxygenation is a key post-growth process to restore Ce:LSO, Ce:LYSO and Ce:YSO to their intrinsic scintillating properties. Without it, the as-grown crystals will show large property variation and inconsistent behavior during scintillating process.

The results also support the idea that LYSO may be a preferred candidate crystal in the process of the invention. Moreover, since the treatment is a thermal diffusion process, it may be desirable to have at least one of the dimensions of the crystal sample to be sufficiently small to shorten the

US 7,151,261 B2

15

oxygen diffusion path and effectively eliminate the oxygen vacancy defect and increase the energy resolution of the crystals. Thermal diffusion of oxygen can be improved at higher temperatures. However, increasing the temperature also increases the risk of excessive oxygenation of the crystal and oxidation of the Ce^{3+} ion into Ce^{4+} non-emitting state. Once the cerium has been oxidized, the non-emitting atom will impair the light emitting center and will drastically affect the light yield of the crystal.

Referring now to the figures to further illustrate the invention, FIG. 3 is a flow diagram generally showing the process of the invention as described. From the start 10 a crystal body is formed 12 having preferably at least one dimension of 20 mm or less. The crystal body is heated 14 in an oxygen ambient for a desired time. Following oxygenation, the crystal is tested 16 to determine whether its light yield has been sufficiently improved and is either passed 18 or rejected 20. Crystals which pass are then assembled into scintillation detectors 22. FIG. 4 generally illustrates the overall industrial process stations in which the invention is incorporated. A crystal is grown in a crystal growth furnace 30. The as-grown crystal is then placed in an oxygen diffusion furnace 32 for oxygenation. Following oxygenation, the crystal proceeds to a test station 34, where it is evaluated for its light yield performance. A crystal meeting performance requirements is then directed to an assembly station 36, where it is assembled into a scintillation detector. FIG. 5 shows a typical scintillation detector 40, which includes at least a photon detector 42 and a crystal 44 enhanced according to the invention. In this case, the crystal shown is a rod-shaped crystal, having a predetermined diameter D of a dimension suitable for oxygenation. FIG. 6 illustrates another scintillation detector 50, which includes a photon detector 52 and, in this case, a rectangular crystal 54 enhanced by the process of the present invention. The rectangular crystal has a predetermined height H of a dimension suitable for oxygenation according to the invention.

Accordingly, in the drawings and specification, there have been disclosed typical preferred embodiments of the invention, and although specific terms are employed, the terms are used in a descriptive sense only and not for purposes of limitation. The invention has been described in considerable detail with specific reference to these illustrated embodiments. It will be apparent, however, that various modifications and changes can be made within the spirit and scope of the invention as described in the foregoing specification and as defined in the appended claims.

That which is claimed is:

1. A method of enhancing performance of a body of monocrystalline cerium doped lutetium orthosilicate (LSO) in response to irradiation with high energy radiation, the method comprising:

diffusing oxygen into the body of monocrystalline LSO by heating the body for a period of time in an ambient containing oxygen.

2. The method of claim 1, wherein diffusing is carried out so that the body of monocrystalline LSO is fully oxygenated.

3. The method of claim 1, wherein diffusing is carried out so that the cerium is not further oxidized to a 4+ state.

4. The method of claim 1, wherein diffusing is carried out so that the body of monocrystalline LSO is not visually yellow in color.

5. The method of claim 1, further comprising forming the body of monocrystalline LSO to have at least one dimension no greater than about 20 mm.

6. The method of claim 5, wherein forming the body comprises forming the body to have a rod shape.

16

7. The method of claim 5, wherein forming the body comprises forming the body to have a rectangular shape.

8. The method of claim 1, wherein the oxygen containing ambient comprises air at atmospheric pressure.

9. The method of claim 1, wherein the oxygen containing ambient is at a pressure above atmospheric.

10. The method of claim 1, wherein the oxygen containing ambient has an oxygen concentration higher than in air.

11. The method of claim 1, wherein heating the body of monocrystalline LSO comprises heating the body to a temperature in a range of between about 1100° to 1400° C.

12. The method of claim 1, wherein heating the body of monocrystalline LSO comprises heating the body to a temperature of approximately 1400° C.

13. The method of claim 1, wherein the period of time is in a range of about 30 to 120 hours.

14. The method of claim 1, wherein the period of time is approximately 30 hours.

15. The method of claim 1, wherein prior to being enhanced the LSO single crystal consists of $Ce:Lu_2SiO_{5-z}$ where z ranges from approximately greater than 0 to less than 5.

16. The method of claim 1, wherein the diffusing results in increased performance based upon a light yield of the body of monocrystalline LSO.

17. The method of claim 1, wherein the diffusing results in increased performance based upon an improved energy resolution of the body of monocrystalline LSO.

18. The method of claim 1, wherein the diffusing results in increased performance based upon at least a 10% improvement in the energy resolution of the monocrystalline body.

19. A method of enhancing performance of a body of monocrystalline cerium doped lutetium orthosilicate (LSO) in response to irradiation with high energy radiation, the body of monocrystalline LSO having oxygen vacancies therein, the method comprising:

supplying oxygen to fill at least some of the oxygen vacancies in the body of monocrystalline LSO.

20. The method of claim 19, wherein supplying is carried out so that the body of monocrystalline LSO is fully oxygenated.

21. The method of claim 19, wherein supplying is carried out so that the cerium is not further oxidized to a 4+ state.

22. The method of claim 19, wherein supplying is carried out so that the body of monocrystalline LSO is not visually yellow in color.

23. The method of claim 19, further comprising forming the body of monocrystalline LSO to have at least one dimension no greater than about 20 mm.

24. The method of claim 19, wherein supplying comprises exposing the body of monocrystalline LSO to air at atmospheric pressure, and at an elevated temperature.

25. The method of claim 24, wherein supplying the elevated temperature is in a range of between about 1100° to 1400° C.

26. The method of claim 24, wherein the exposing is for period of time in a range of about 30 to 120 hours.

27. The method of claim 19, wherein prior to being enhanced the LSO single crystal consists of $Ce:Lu_2SiO_{5-z}$ ranges from greater than 0 to less than 5.0.

28. The method of claim 19, wherein the diffusing results in increased performance based upon at least one of a light yield of the body of monocrystalline LSO; and an energy resolution of the body of monocrystalline LSO.

* * * * *

UNITED STATES PATENT AND TRADEMARK OFFICE
CERTIFICATE OF CORRECTION

PATENT NO. : 7,151,261 B2
APPLICATION NO. : 10/754238
DATED : December 19, 2006
INVENTOR(S) : Bruce Chai

Page 1 of 1

It is certified that error appears in the above-identified patent and that said Letters Patent is hereby corrected as shown below:

Column 1, Line 56	Delete: "quenche" Insert: -- quench --
Column 1, Line 67	Delete: "inventors" Insert: -- inventor --
Column 8, Line 54	Delete: "ard" Insert: -- and --
Column 16, Line 27	Delete: "perfonuance" Insert: -- performance --
Line 28	Delete: "till" Insert: -- fill --
Line 60	Delete: " Ce:Lu ₂ SiO _{5-z} Z" Insert: -- Ce:Lu ₂ SiO _{5-z} where z --

Signed and Sealed this

Thirteenth Day of March, 2007



JON W. DUDAS
Director of the United States Patent and Trademark Office