



US007134994B2

(12) **United States Patent**
Alpert et al.

(10) **Patent No.:** **US 7,134,994 B2**
(45) **Date of Patent:** **Nov. 14, 2006**

(54) **MULTIPURPOSE HOST SYSTEM FOR
INVASIVE CARDIOVASCULAR
DIAGNOSTIC MEASUREMENT
ACQUISITION AND DISPLAY**

(75) Inventors: **Howard David Alpert**, El Dorado
Hills, CA (US); **Paul Michael Hoesit**,
El Dorado Hills, CA (US)

(73) Assignee: **Volcano Corporation**, Sacramento, CA
(US)

(*) Notice: Subject to any disclaimer, the term of this
patent is extended or adjusted under 35
U.S.C. 154(b) by 449 days.

(21) Appl. No.: **10/151,423**

(22) Filed: **May 20, 2002**

(65) **Prior Publication Data**

US 2003/0216621 A1 Nov. 20, 2003

(51) **Int. Cl.**

A61B 5/00 (2006.01)

A61B 5/02 (2006.01)

(52) **U.S. Cl.** **600/300**; 600/301; 600/481;
600/485

(58) **Field of Classification Search** **600/300-301**,
600/485, 486, 490, 500-505
See application file for complete search history.

(56) **References Cited**

U.S. PATENT DOCUMENTS

- 4,850,358 A 7/1989 Millar
- 4,856,529 A 8/1989 Segal
- 4,869,263 A 9/1989 Segal et al.
- 4,947,852 A 8/1990 Nassi et al.
- 5,046,497 A 9/1991 Millar
- 5,059,851 A 10/1991 Corl et al.
- 5,085,223 A 2/1992 Lars et al.
- 5,088,036 A * 2/1992 Ellis et al. 707/206
- 5,105,818 A 4/1992 Christian et al.
- 5,121,749 A 6/1992 Nassi et al.

- 5,125,058 A 6/1992 Tenerz et al.
- 5,178,159 A 1/1993 Christian
- 5,195,375 A 3/1993 Tenerz et al.
- 5,226,423 A 7/1993 Tenerz et al.
- 5,271,404 A 12/1993 Corl et al.
- 5,348,481 A 9/1994 Ortiz
- 5,358,409 A 10/1994 Obara
- 5,517,989 A 5/1996 Frisbie et al.
- 5,590,650 A * 1/1997 Genova 600/301
- 5,651,373 A 7/1997 Mah
- 5,668,320 A 9/1997 Cowan
- RE35,648 E 11/1997 Tenerz et al.
- 5,694,946 A 12/1997 Tenerz et al.
- 5,797,856 A 8/1998 Frisbie et al.
- 5,908,385 A 6/1999 Chechelski et al.
- 5,938,624 A 8/1999 Akerfeldt et al.
- 6,089,103 A 7/2000 Smith
- 6,090,052 A 7/2000 Akerfeldt et al.

(Continued)

FOREIGN PATENT DOCUMENTS

WO WO 97/27802 8/1997

OTHER PUBLICATIONS

U.S. Appl. No. 09/861,464, Dorando et al.

(Continued)

Primary Examiner—Robert L Nasser

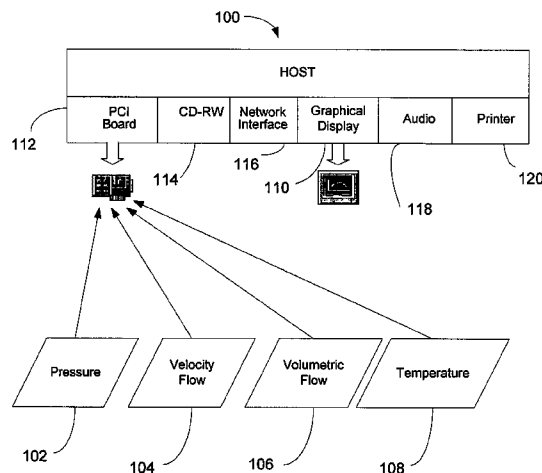
(74) *Attorney, Agent, or Firm*—Leydig, Voit & Mayer Ltd

(57)

ABSTRACT

A multifunctional invasive cardiovascular diagnostic measurement host is disclosed that interfaces a variety of sensor devices, such as guide wire-mounted pressure sensors, flow sensors, temperature sensors, etc, and provides a multi-mode graphical user interface providing a plurality of displays in accordance with the various types of sensors and measurements rendered by the sensors.

20 Claims, 16 Drawing Sheets



US 7,134,994 B2

Page 2

U.S. PATENT DOCUMENTS

6,106,476 A	8/2000	Corl et al.	6,336,906 B1	1/2002	Hammarstrom et al.	
6,106,486 A	8/2000	Tenerz et al.	6,343,514 B1	2/2002	Smith	
6,112,598 A	9/2000	Tenerz et al.	6,358,202 B1 *	3/2002	Arent	600/300
6,142,958 A	11/2000	Hammarstrom et al.	6,409,677 B1	6/2002	Tulkki	
6,167,763 B1	1/2001	Tenerz et al.	6,428,336 B1	8/2002	Akerfeldt	
6,182,513 B1	2/2001	Stemme et al.	6,565,514 B1 *	5/2003	Svanerudh et al.	600/486
6,188,407 B1	2/2001	Smith et al.	6,569,095 B1 *	5/2003	Eggers	600/300
6,196,980 B1	3/2001	Akerfeldt et al.	2002/0043113 A1	4/2002	Tulkki et al.	
6,210,339 B1	4/2001	Kiepen et al.	2003/0191383 A1 *	10/2003	Ben-Haim et al.	600/407
6,248,083 B1	6/2001	Smith et al.				
6,265,792 B1	7/2001	Granchukoff				
6,272,468 B1 *	8/2001	Melrose				705/2
6,322,502 B1 *	11/2001	Schoenberg et al.				600/300

OTHER PUBLICATIONS

U.S. Appl. No. 10/086,143, Mott et al.

* cited by examiner

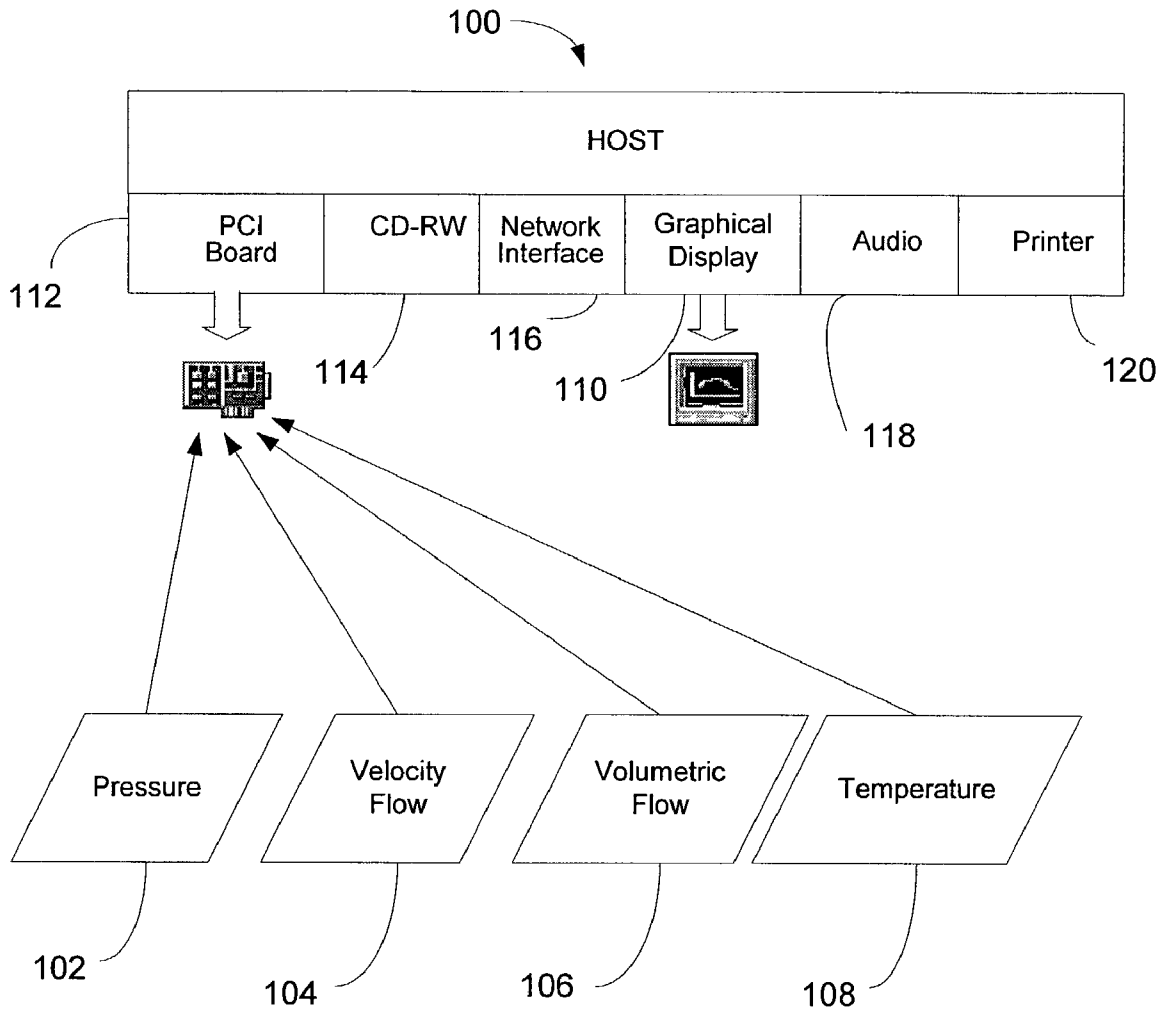


FIG. 1

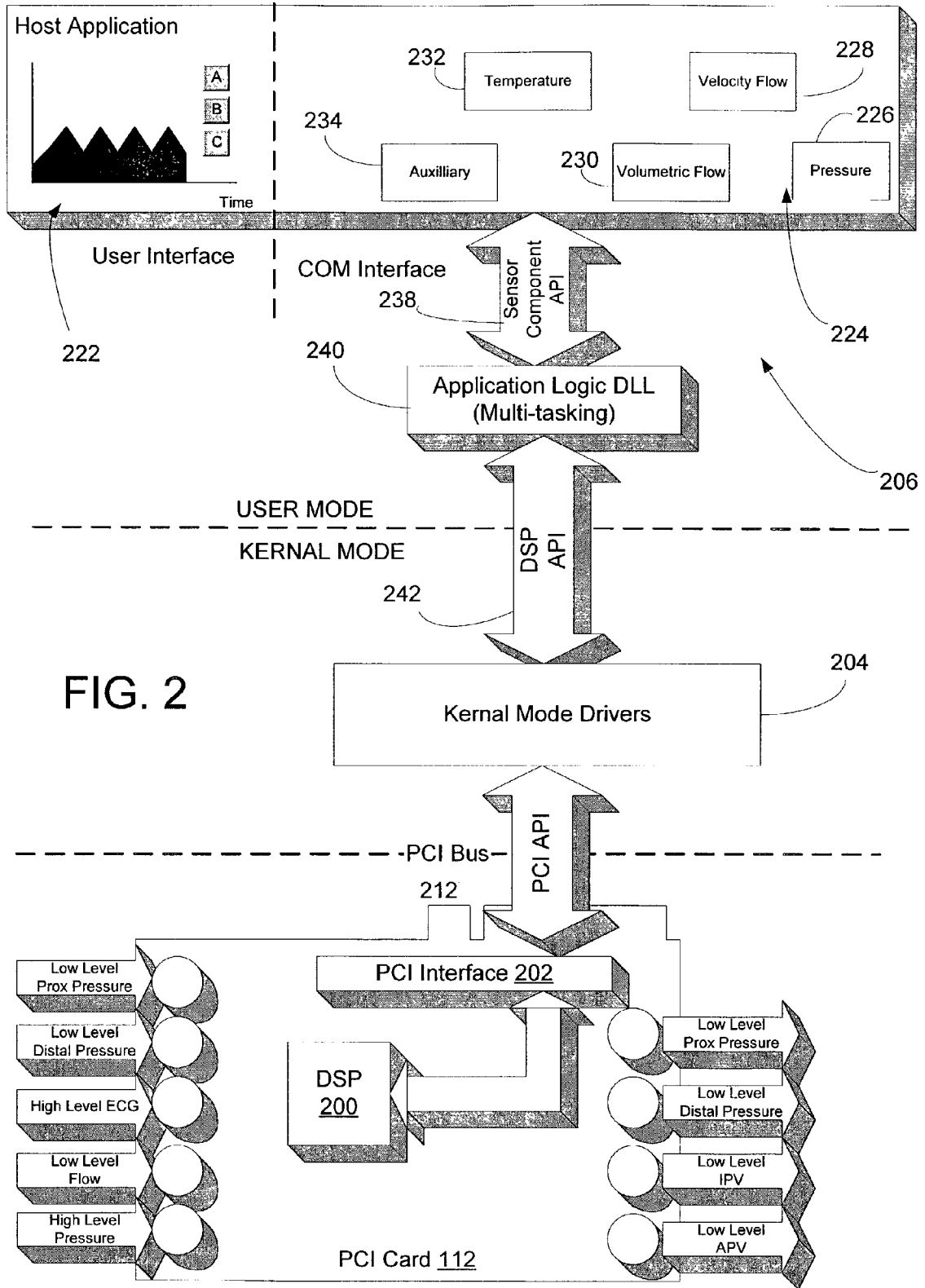


FIG. 2

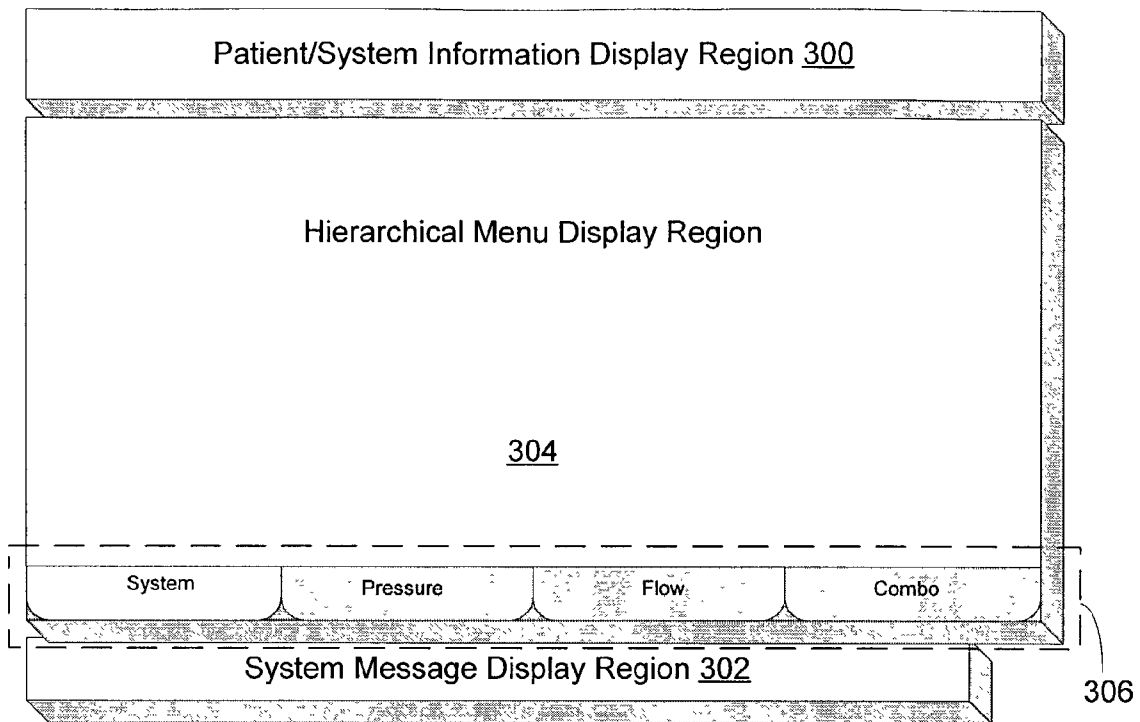


FIG. 3

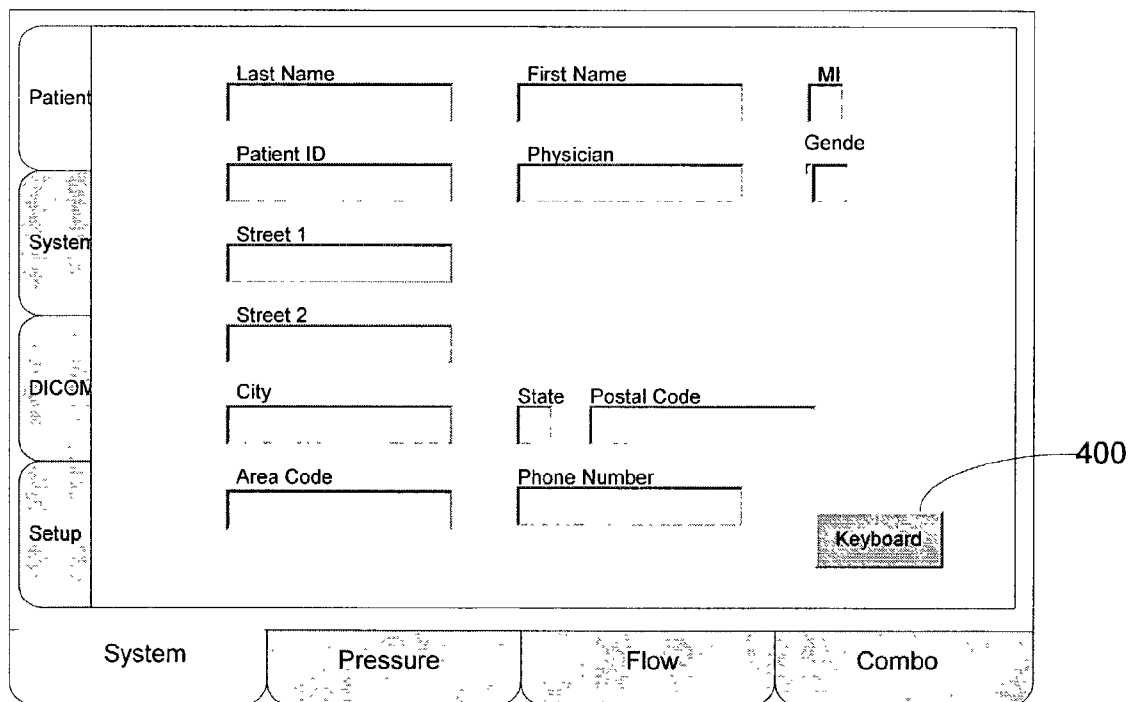


FIG. 4

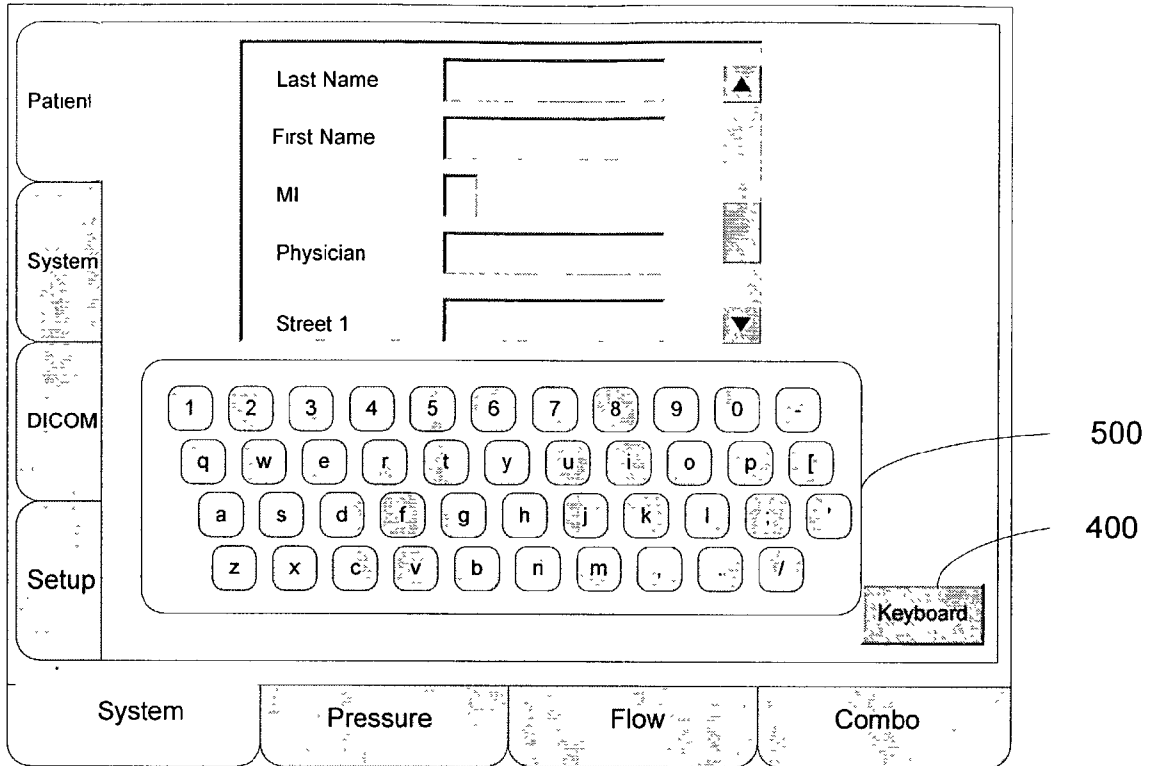


FIG. 5

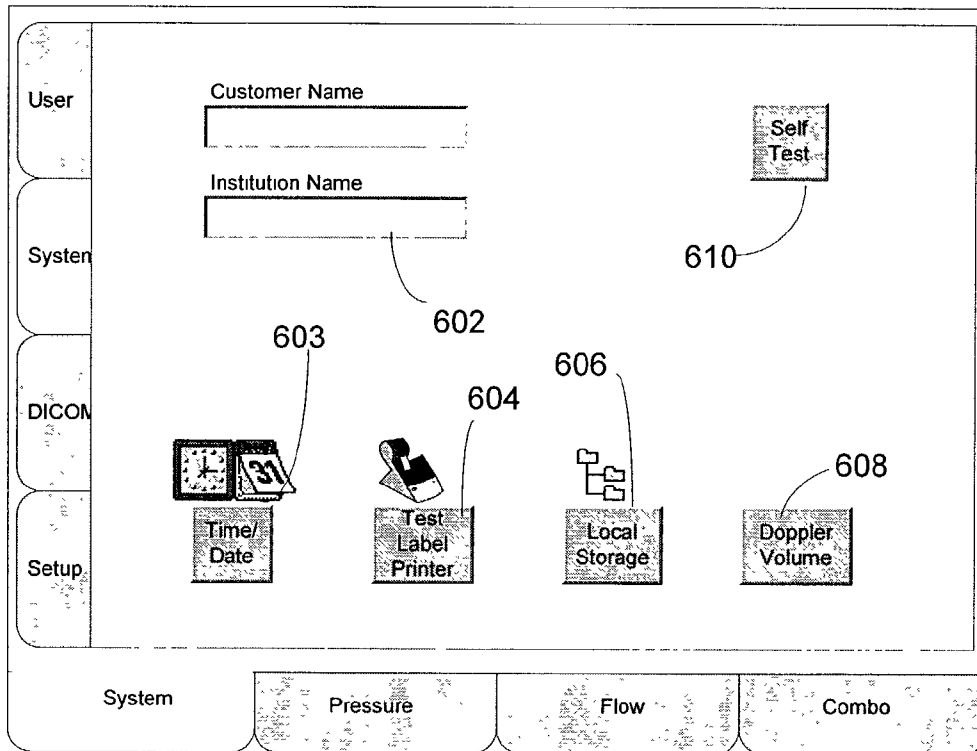


FIG. 6

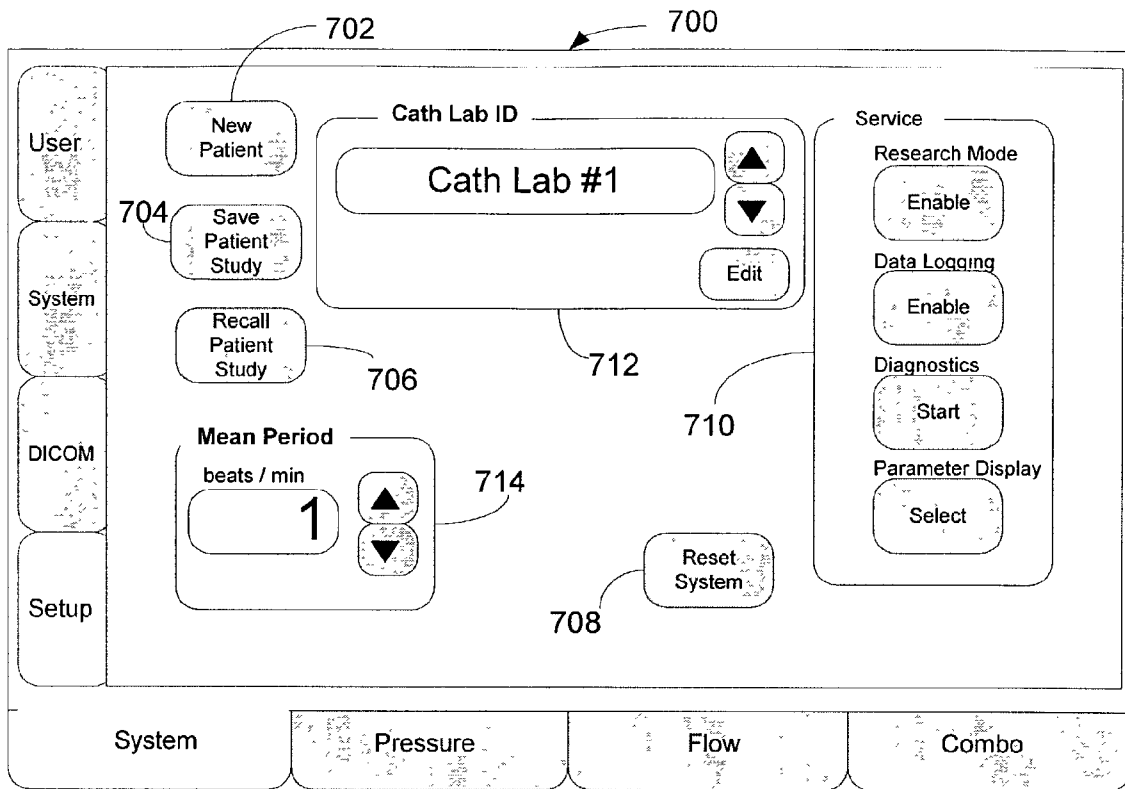


FIG. 7

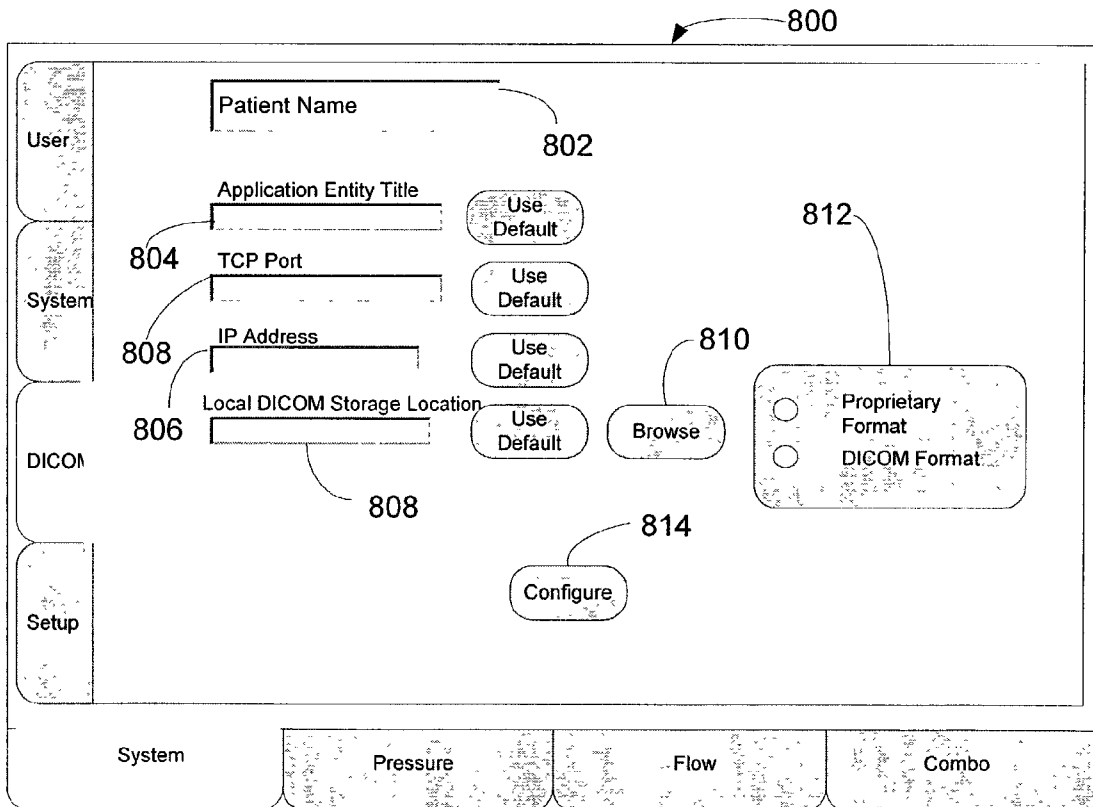
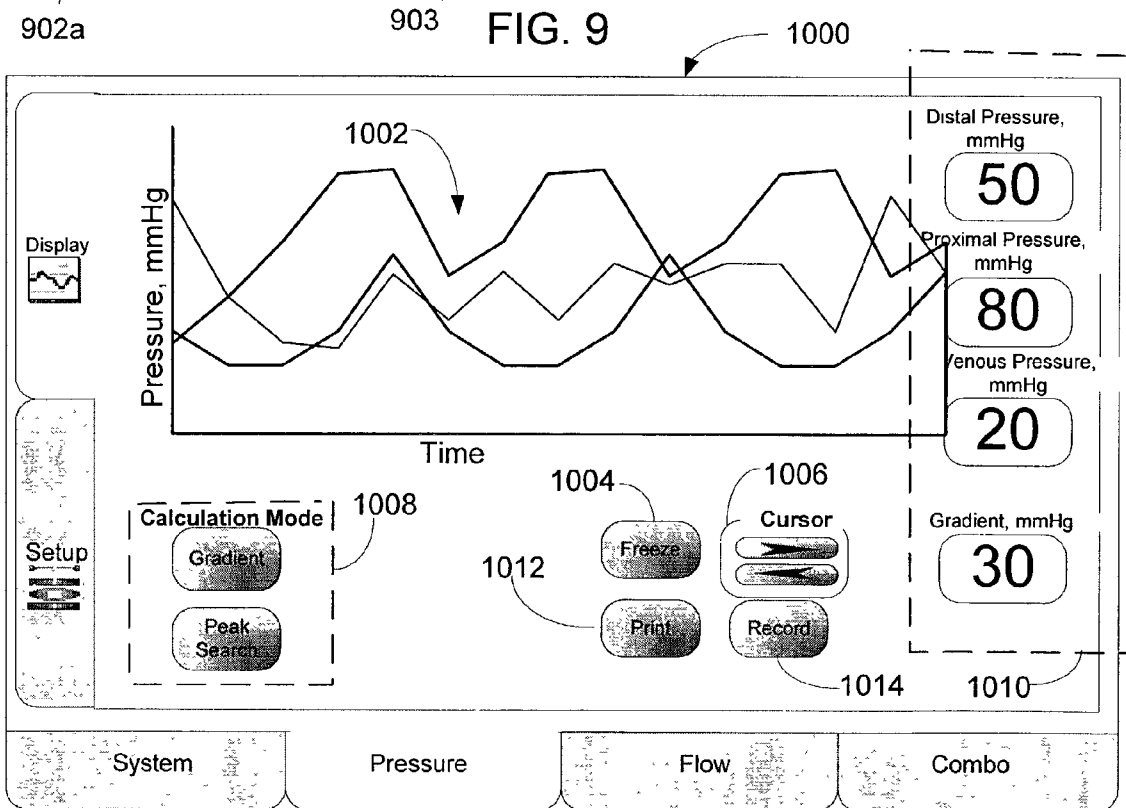
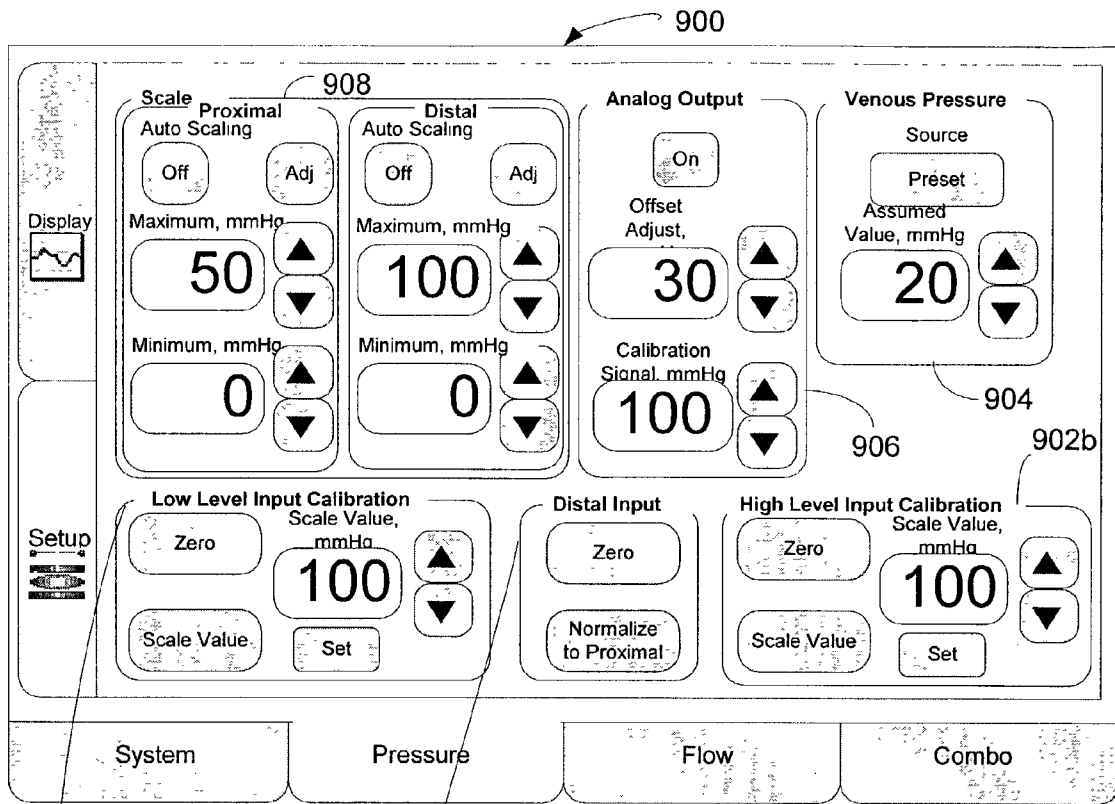


FIG. 8



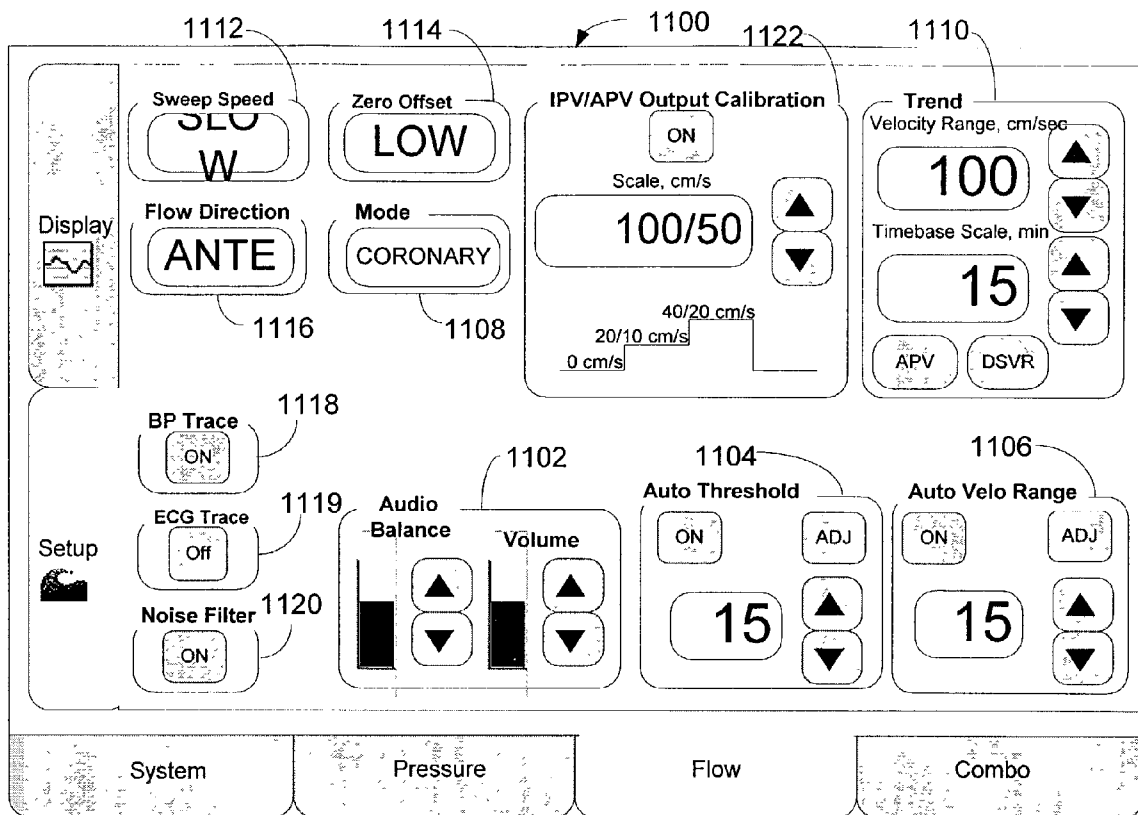


FIG. 11

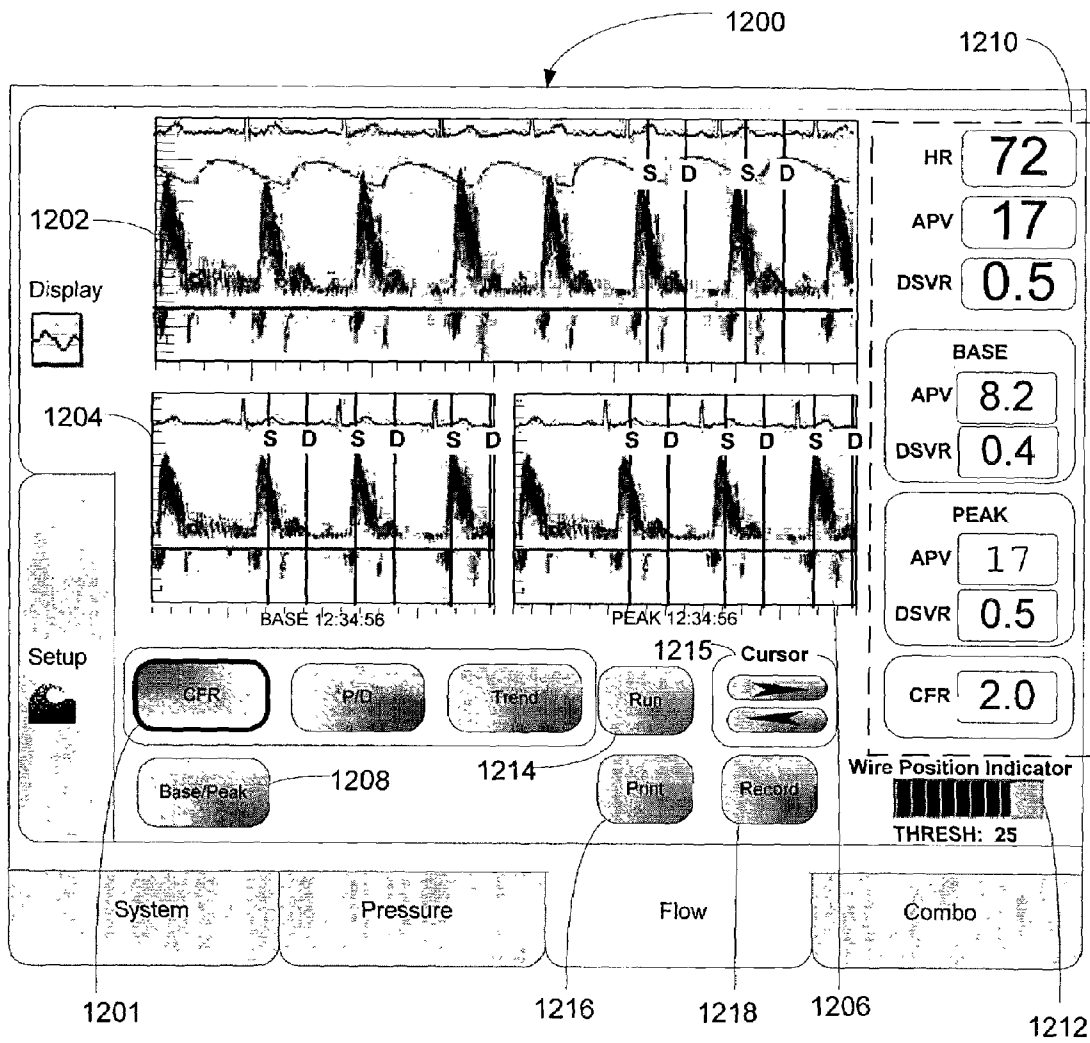


FIG. 12a

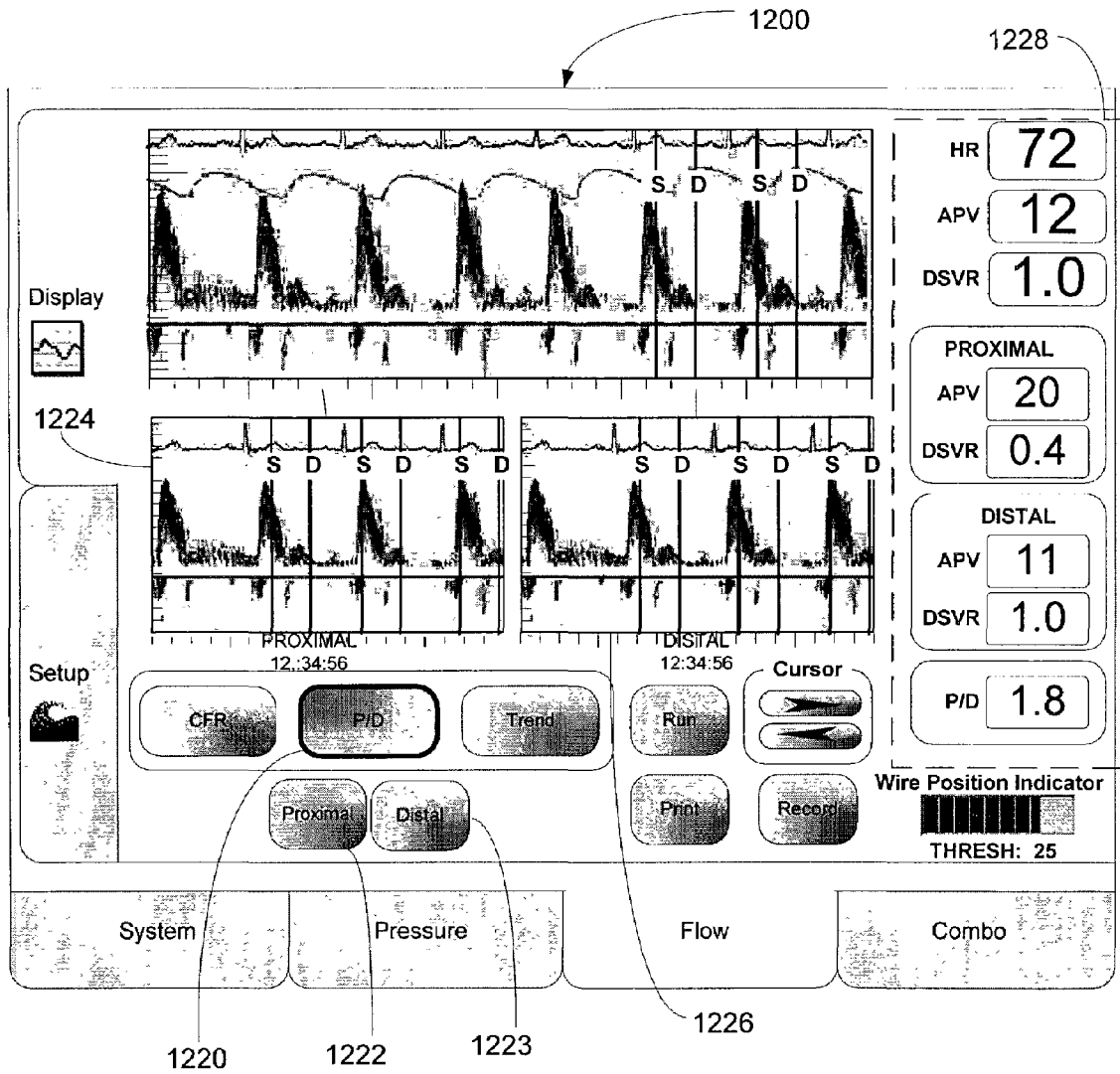


FIG. 12b

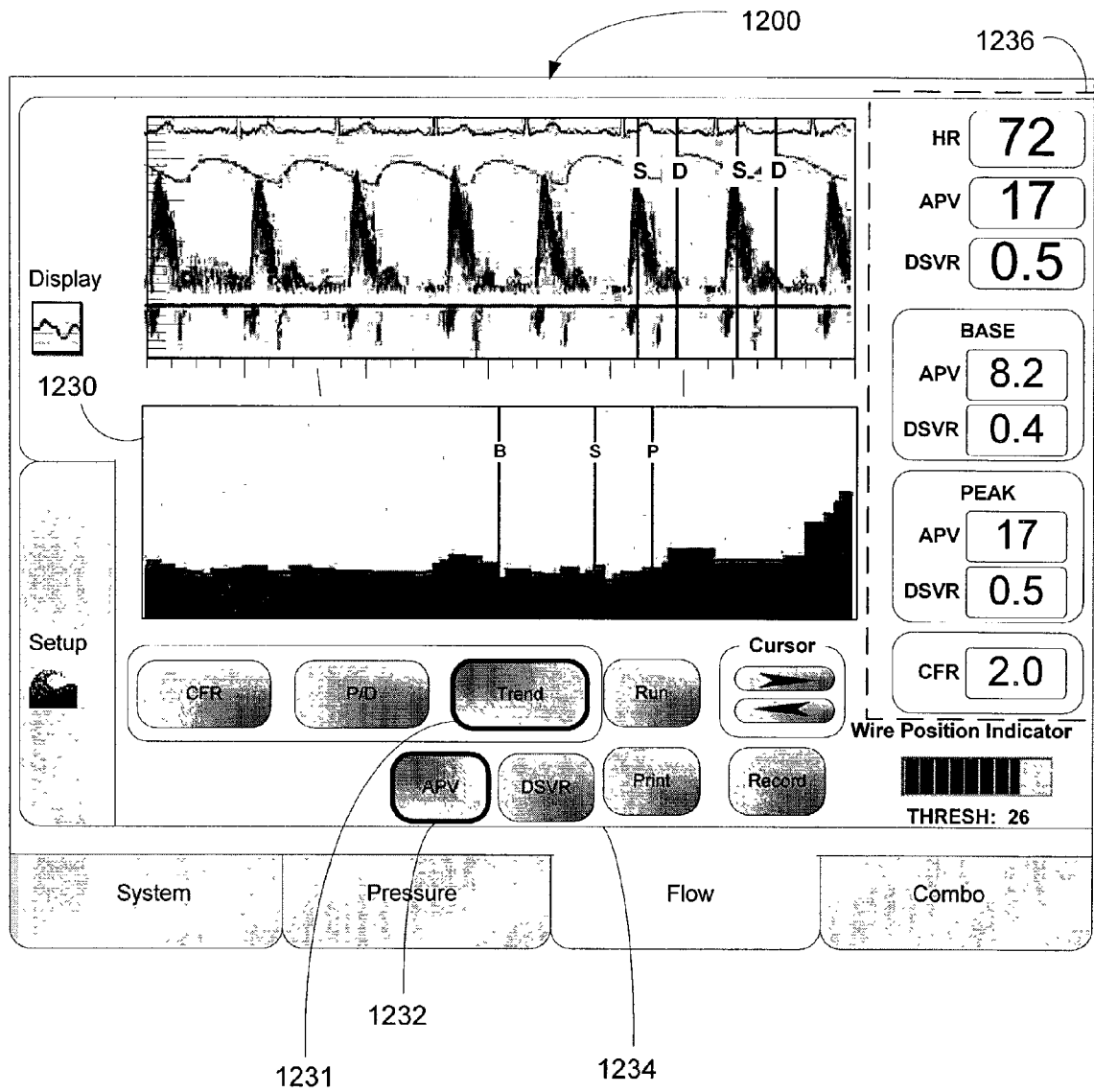


FIG. 12c

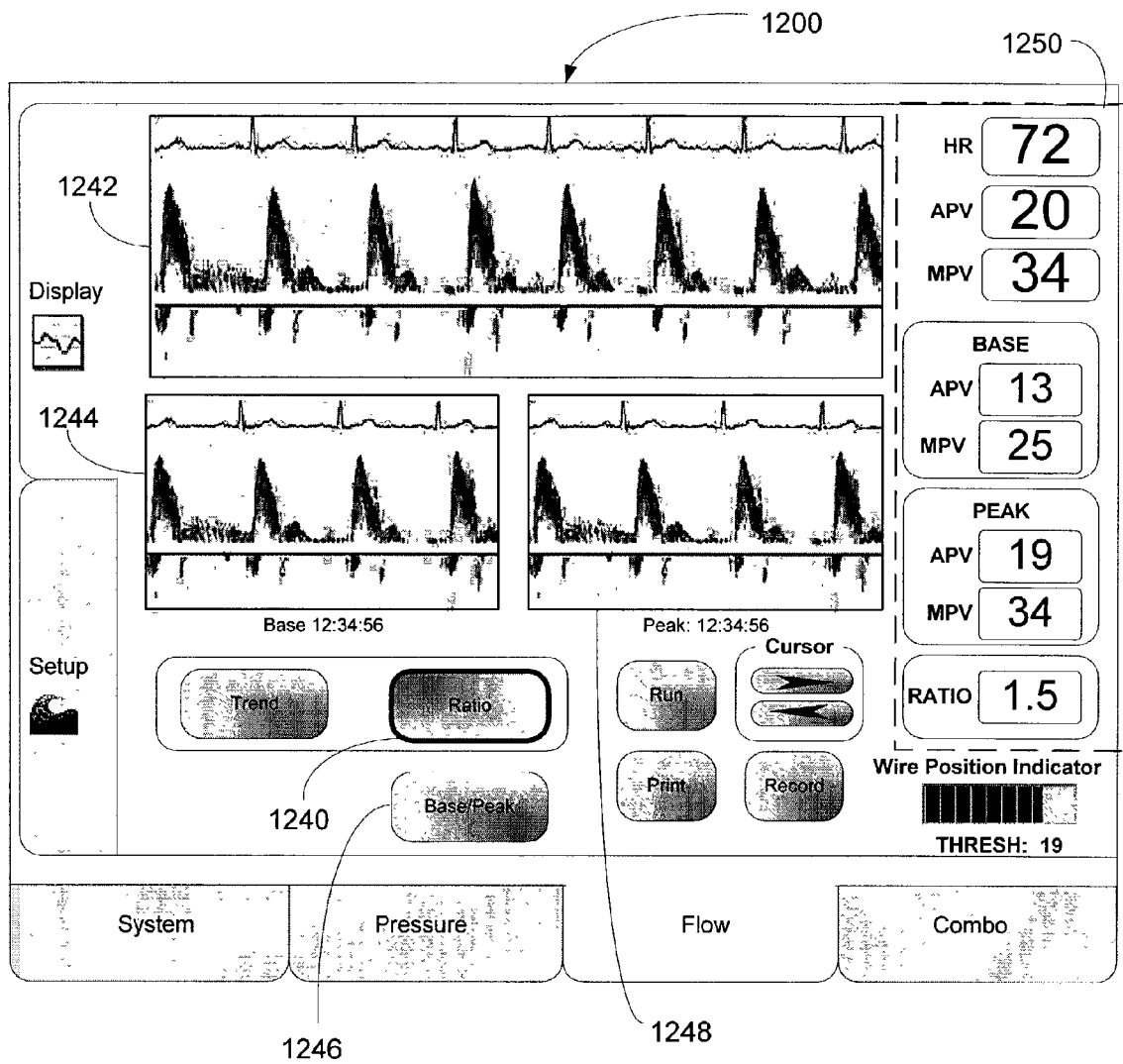


FIG. 12d

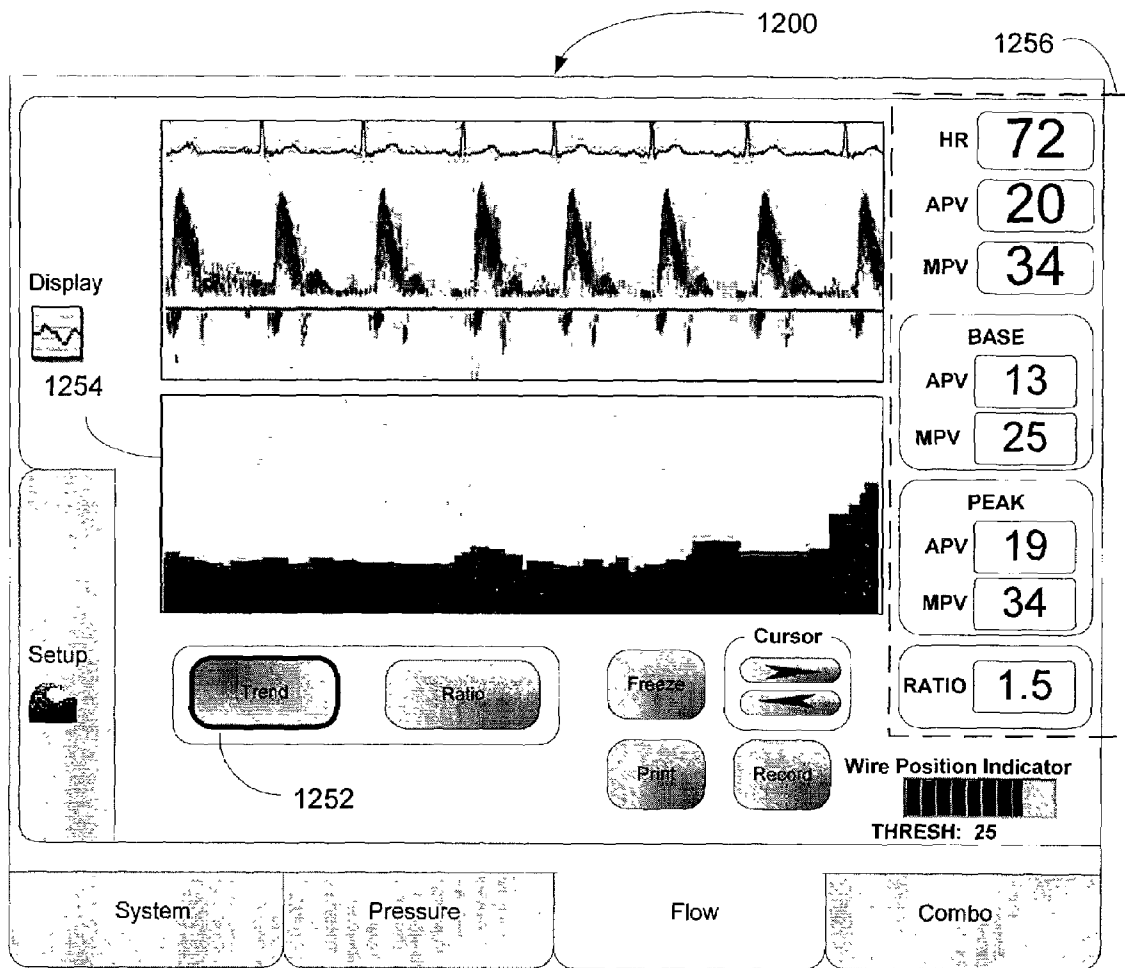


FIG. 12e

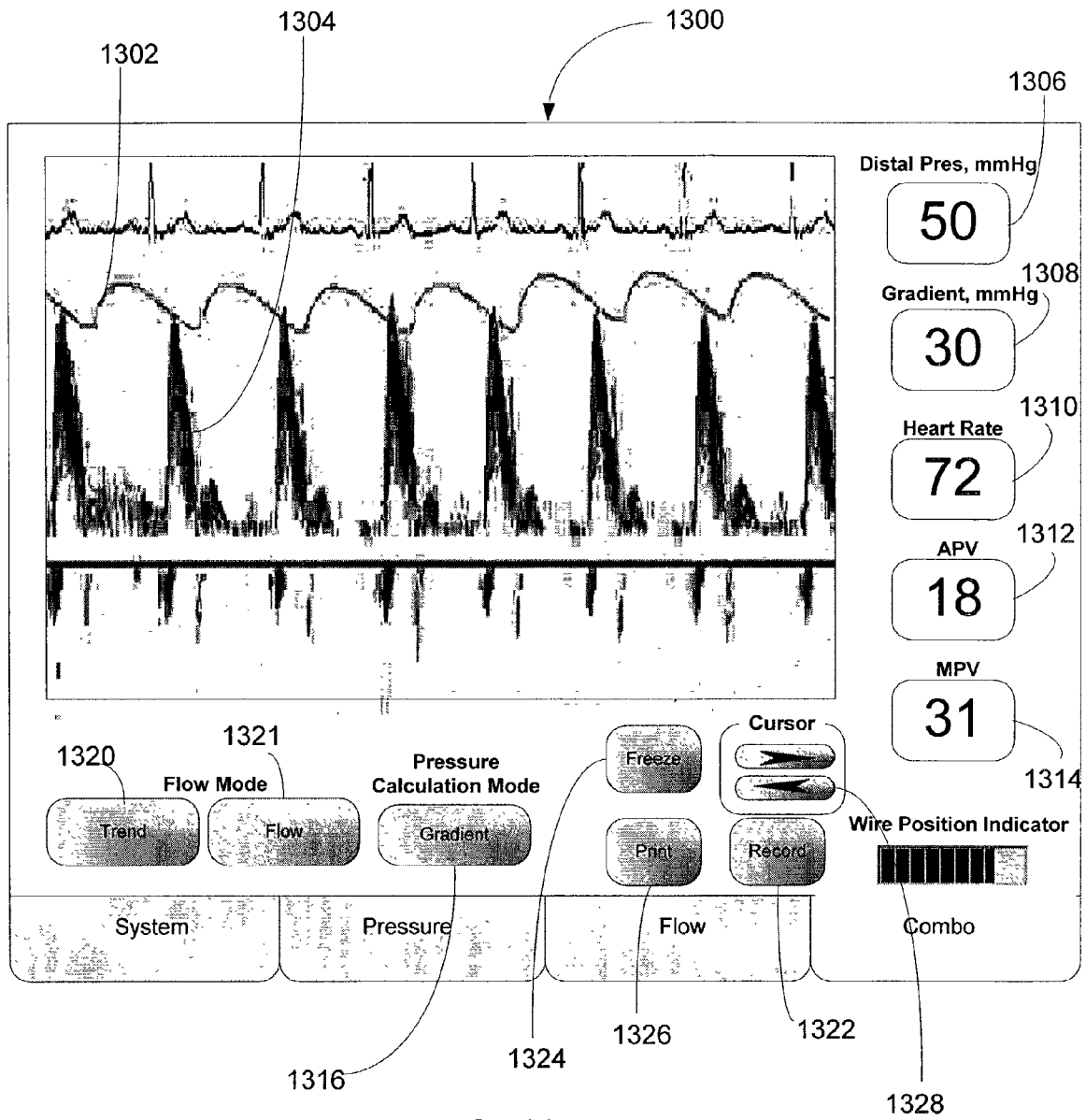


FIG. 13

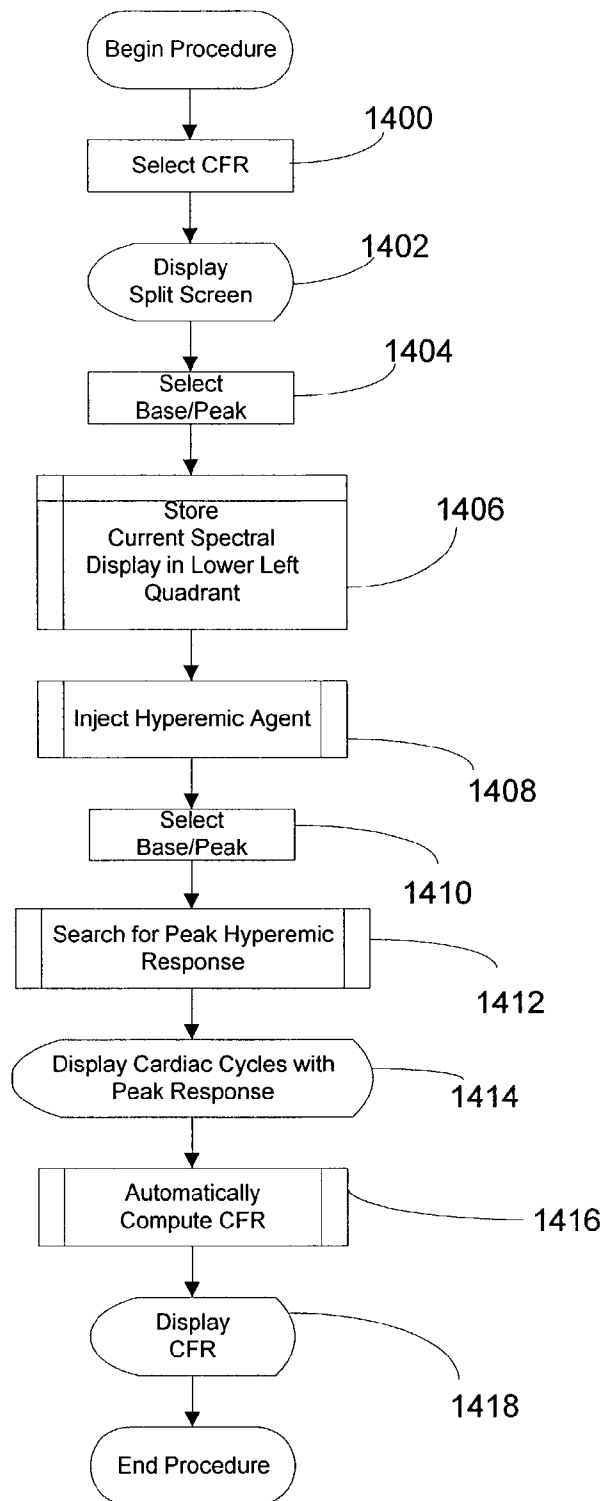


FIG. 14

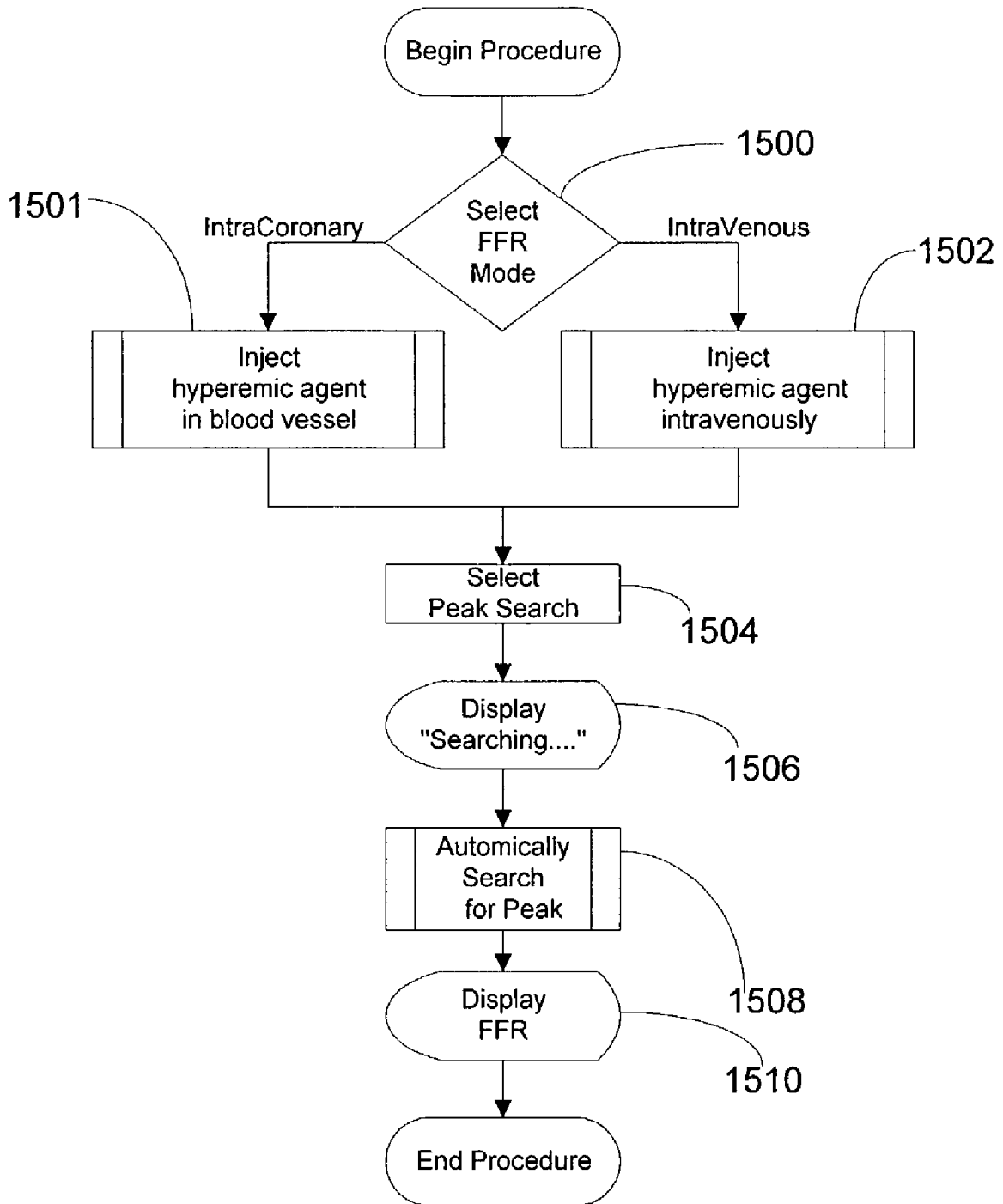


FIG. 15

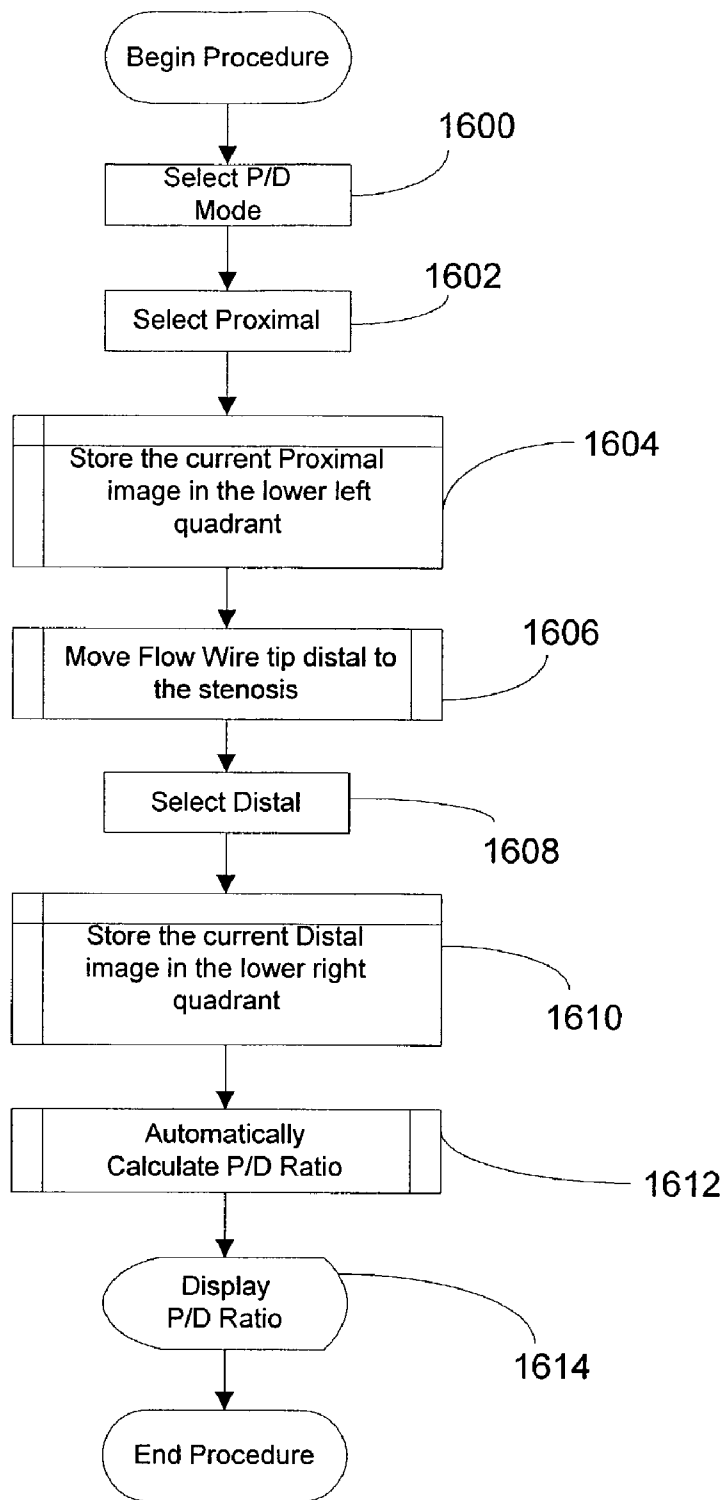


FIG. 16

**MULTIPURPOSE HOST SYSTEM FOR
INVASIVE CARDIOVASCULAR
DIAGNOSTIC MEASUREMENT
ACQUISITION AND DISPLAY**

AREA OF THE INVENTION

The present invention generally relates to the area of diagnostic medical equipment, and more particularly to diagnostic devices for identifying and/or verifying efficacy of treatment of problematic blockages within coronary arteries by means of sensors mounted upon the end of a flexible elongate member such as a guide wire.

BACKGROUND OF THE INVENTION

Innovations in diagnosing and verifying the level of success of treatment of cardiovascular disease have migrated from external imaging processes to internal, catheterization-based, diagnostic processes. Diagnosis of cardiovascular disease has been performed through angiogram imaging wherein a radiopaque dye is injected into a vasculature and a live x-ray image is taken of the portions of the cardiovascular system of interest. Magnetic resonance imaging (MRI) has also been utilized to non-invasively detect cardiovascular disease. Diagnostic equipment and processes also have been developed for diagnosing vasculature blockages and other vasculature disease by means of ultra-miniature sensors placed upon a distal end of a flexible elongate member such as a catheter, or a guide wire used for catheterization procedures.

One such ultra-miniature sensor device is a pressure sensor mounted upon the distal end of a guide wire. An example of such a pressure sensor is provided in Corl et al. U.S. Pat. No. 6,106,476, the teachings of which are expressly incorporated herein by reference in their entirety. Such intravascular pressure sensor measures blood pressure at various points within the vasculature to facilitate locating and determining the severity of stenoses or other disruptors of blood flow within the vessels of the human body. Such devices are presently used to determine the need to perform an angioplasty procedure by measuring blood pressure within a vessel at multiple locations, including both upstream and downstream of a stenosis and measuring a pressure difference that indicates the severity of a partial blockage of the vessel.

In particular, a guide wire mounted pressure sensor is utilized to calculate fractional flow reserve (or "FFR"). In the coronary arteries, FFR is the maximum myocardial flow in the presence of stenosis divided by the normal maximum myocardial flow. This ratio is approximately equal to the mean hyperemic (i.e., dilated vessel) distal coronary pressure P_d divided by the mean arterial pressure P_a . P_d is measured with a pressure sensor mounted upon a distal portion of guide wire or other flexible elongate member after administering a hyperemic agent into the blood vessel causing it to dilate. P_a is measured using a variety of techniques in areas proximal of the stenosis, for example, in the aorta.

FFR provides a convenient, cost-effective way to assess the severity of coronary and peripheral lesions, especially intermediate lesions. FFR provides an index of stenosis severity that allows rapid determination of whether an arterial blockage is significant enough to limit blood flow within the artery, thereby requiring treatment. The normal value of FFR is about 1.0. Values less than about 0.75 are

deemed significant and require treatment. Treatment options include angioplasty and stenting.

Another such known ultra-miniature sensor device is a Doppler blood flow velocity sensor mounted upon the end of a guide wire. Such device emits ultrasonic waves along the axis of a blood vessel and observes a Doppler-shift in reflected echo waves to determine an approximation of instantaneous blood flow velocity. A Doppler transducer is shown in Corl et al. U.S. Pat. No. 6,106,476 on a guide wire that also carries a pressure transducer. Such devices are presently used to determine the success of a treatment to lessen the severity of a vessel blockage.

In particular, a Doppler transducer sensor is utilized to measure Coronary Flow Reserve (or "CFR"). CFR is a measure for determining whether a stenosis is functionally significant after treatment (e.g., post-angioplasty). CFR comprises a ratio of the hyperemic average peak velocity of blood flow to the baseline (resting) average peak velocity. Instantaneous peak velocity (IPV) is the peak observed velocity for an instantaneous Doppler spectrum provided by a Doppler transducer. An exemplary method of calculating an average peak velocity (APV) comprises averaging a set of IPV's over a cardiac cycle.

A known technique for determining whether an angioplasty was effective was to perform angioplasty, wait a few days, then perform thallium scintigraphy (imaging). If the angioplasty procedure was not effective, then re-intervention was performed and the lesion was again treated via angioplasty. On the other hand, using CFR, a flow measurement is taken immediately after angioplasty or stenting. The flow measurement is utilized to determine whether adequate flow has been restored to the vessel. If not, the balloon is inflated without the need for secondary re-intervention. A normal CFR is greater than about 2 and indicates that a lesion is not significant. Lower values may require additional intervention. In addition to being used post-treatment to determine the efficacy of treatment, CFR may be measured prior to treatment to determine if treatment is required.

A guide wire combination device, comprising a pressure sensor and a flow sensor having substantially different operational characteristics, was disclosed in the Corl et al. U.S. Pat. No. 6,106,476. While it has been proposed within the Corl et al. U.S. Pat. No. 6,106,476 to combine pressure and flow sensors on a single flexible elongate member, the prior art does not address how such a combination sensor is coupled to consoles that display an output corresponding to the signals provided by the flexible elongate member corresponding to the sensed pressure and flow within a vessel. Indeed, the relevant art comprises special-purpose monitors having static display interfaces that display a static set of parameters corresponding to a particular fixed set of diagnostic measurements (e.g., an aortic pressure and a pressure taken from a location proximate a stenosis). Thus, one type of monitor is utilized to process and display sensed pressure within a blood vessel. Another type of monitor provides output relating to blood flow within a vessel. As new intravascular diagnostic devices are developed, yet other special-purpose monitors/consoles are developed to display to a physician the sensed parameters.

There is substantial interest in simplifying every aspect of the operating room to reduce the incidence of errors. As one can imagine, the aforementioned intravascular pressure sensors are utilized in operating room environments including many types of sensors and equipment for diagnosing and treating cardiovascular disease. Clearly, the room for error is very limited when performing such activities. Notwithstanding the interest to keep equipment and operations

3

simple, there exists a variety of different sensors that are potentially inserted within a human vasculature to diagnose arterial disease (e.g., blockages) and/or monitor vital signs during a medical procedure. The approach taken in the field of interventional cardiac imaging has been to provide multiple, special-purpose monitor consoles. Each monitor type is linked to a particular type of sensor device.

In a known prior intravascular pressure sensor-to-physiological monitor interface arrangement, marketed by JOMED Inc. of Rancho Cordova, Calif., a physiology monitor receives and displays, on a permanently configured display interface, a set of pressure values corresponding to two distinct pressure signals that are received by the monitor. A first pressure signal is provided by an aortic pressure sensor, and a second pressure signal corresponds to a pressure sensed by a distally mounted solid-state pressure sensor mounted upon a guide wire. The display interface of the monitor is permanently configured to output parameter values corresponding to those two signals. Thus, if display of, for example, a flow signal value is desired, then a separate monitor, such as JOMED Inc.'s FloMap, is used.

SUMMARY OF THE INVENTION

The present invention provides addresses a need to provide a flexible, multipurpose host system for processing and displaying signals rendered by invasive cardiovascular sensors to reduce the amount of equipment and complexity of procedures for diagnosing and determining the efficacy of treatment of cardiovascular stenoses.

In particular, the present invention comprises a multipurpose host system that facilitates invasive cardiovascular diagnostic measurement acquisition and display. The host system includes a number of modularized components. The host system includes an external input signal bus interface for receiving data arising from cardiovascular diagnostic measurement sensors such as, for example, pressure transducers, Doppler flow transducers, temperature sensors, pH sensors, optical sensors, etc.

The host system also includes a plurality of measurement processing components for receiving data of particular sensor types. The processing components render diagnostic measurement parameter values according to the received data arising from various types of attached sensors. In a particular embodiment, the processing components are instantiated at startup time from component modules that are dynamically integrated into the host system. This allows the functionality of the host system to be extended to include new types of sensors without requiring an overhaul of the existing system software.

The host system also includes a multi-mode graphical user interface host. The interface host comprises a set of diagnostic measurement user interfaces. The output interfaces are integrated with the processing components and carry out displaying, on a graphical user interface a set of output values corresponding to parameter values rendered by the processing components.

BRIEF DESCRIPTION OF THE DRAWINGS

While the appended claims set forth the features of the present invention with particularity, the invention, together with its objects and advantages, may be best understood from the following detailed description taken in conjunction with the accompanying drawings of which:

FIG. 1 is a schematic drawing depicting a system for conducting invasive cardiovascular diagnoses including an

4

external input signal interface for receiving diagnostic parameter values of multiple types and a multimode graphical user interface for presenting the values according to a user-selected one of the multiple display modes;

FIG. 2 is a schematic drawing depicting an exemplary architecture of the system depicted in FIG. 1;

FIG. 3 depicts an exemplary generic graphical user interface specification upon which a set of graphical displays are based in accordance with the various graphical user interface modes supported by a host system embodying the present invention;

FIG. 4 depicts an exemplary graphical user interface for a patient data entry sub-screen of a system display mode of the host system;

FIG. 5 depicts an exemplary graphical user interface for a user/patient data entry sub-screen of a system display mode of the host system that includes a keyboard;

FIG. 6 depicts an exemplary graphical user interface for a system configuration sub-screen of a system display mode of the host system;

FIG. 7 depicts an exemplary graphical user interface for a setup sub-screen of a system display mode of the host system;

FIG. 8 depicts an exemplary graphical user interface for a communications sub-screen of a system display mode of the host system;

FIG. 9 depicts an exemplary graphical user interface for a setup sub-screen of a pressure display mode of the host system;

FIG. 10 depicts an exemplary graphical user interface for a display sub-screen of a pressure display mode of the host system;

FIG. 11 depicts an exemplary graphical user interface for a setup sub-screen of a flow display mode of the host system;

FIGS. 12a-e depict an exemplary graphical user interface for a display sub-screen of a flow display mode of the host system;

FIG. 13 depicts an exemplary graphical user interface for a combination flow and pressure display mode of operation of the host system;

FIG. 14 is a flowchart summarizing a set of steps for carrying out a coronary flow reserve measurement using the multipurpose host system described herein;

FIG. 15 is a flowchart summarizing a set of steps for carrying out a fractional flow reserve measurement using the multipurpose host system described herein; and

FIG. 16 is a flowchart summarizing a set of steps for carrying out a proximal/distal pressure ratio measurement using the multipurpose host system described herein.

DETAILED DESCRIPTION OF THE DRAWINGS

A multipurpose host system for invasive cardiovascular diagnostic measurement acquisition and display provides an advantage of the prior known systems in regard to its ability to present multiple user display interfaces. Each of the display interfaces corresponds to a particular purpose for which the multipurpose host is currently configured based, for example, upon one or more sensor devices communicatively coupled to its external signal interface. The host system is used, for example, in conjunction with interventional cardiology, e.g., angiography, or interventional procedures, e.g., angioplasty, to evaluate the hemodynamic status of an arterial blockage.

With reference to FIG. 1, a multipurpose host system 100 is, by way of example, a personal computer architecture-based system for assessing real-time invasive cardiovascular

parameters from within a blood vessel (e.g., blood pressure and flow measurements). The multipurpose host processes input signals from multiple micro-miniature guide wire-mounted sensors (e.g., Doppler and pressure transducers) to produce real-time measurements, display various waveforms and derived parameters, and output high-level voltages proportional to calculated parameter values. The devices that supply the various data input signals are represented by pressure input **102**, velocity flow input **104**, volume flow **106**, and temperature input **108**. In an embodiment of the invention, the devices that provide the input to the host system **110** are presently used in existing, special-purpose processing boxes. This set is exemplary, as those skilled in the art will readily appreciate in view of this disclosure that alternative systems advantageously receive and process such diagnostic inputs as pH, ultrasound and light-based cross-sectional images of a vessel, biochemical markers, light spectrometry for tissue characterization, etc. It is further noted that the displayed output of the host system **100** is not limited to producing the measured parameters. Rather, the various modes of the host system **100** are capable of synthesizing generalized measures of physiological status (e.g., whether a blockage is severe and needs treatment) based upon the input parameter values.

The host system **100** operates in a plurality of modes, and each mode includes its own distinct graphical interface (rendered on graphical output display **110**) and input parameter values (provided via a peripheral component interconnect (PCI) card **112**) corresponding to particular sensor types. The PCI card **112** includes, by way of example, a digital signal processor (DSP) that samples data provided by the communicatively coupled input sensors and processes the sampled data to render digital data in a format expected by higher level components of the host system **100**. Exemplary processes performed by the DSP include: A/D and D/A conversions, FFTs, level shifting, normalizing, and scaling. After processing the data, it is stored in a dual port RAM accessed, via the PCI bus of the host **100**, by higher level application processes executing on the host system **100**.

In the exemplary embodiment, input sensor types driving the output displays include pressure, flow, and temperature sensors mounted upon a flexible elongate member including combinations thereof placed, for example, upon a single guide wire or catheter. In fact, the flexible module-based architecture (see, FIG. 2) of the exemplary host system **110**, which supports simultaneous display of multiple distinct types of input signals on a single graphical user interface, is particularly well suited for such combination devices since their output can be simultaneously monitored on a single interface even though modules that process the sensor inputs execute independently within the host system **100**.

The exemplary host system **100** operates in pressure, flow, and combination (pressure/flow) modes. Though not essential to the invention, operation of each mode is preferably independent of the other modes, and each diagnostic display mode is driven by a designated set of parameter generation modules associated with particular input signals received by the host system from a communicatively coupled sensor. The pressure mode provides the user with a selection of calculated/derived parameters such as for example: proximal-distal pressure gradient, distal/proximal pressure ratio, normalized pressure ratio, and fractional flow reserve (normalized pressure ratio under hyperemic conditions). In an exemplary embodiment, the flow mode is divided into three operational modes: peripheral, coronary, and research. The peripheral mode acquires measurements in the cerebral or peripheral vasculature. The coronary mode acquires mea-

surements in the coronary arteries. The research mode provides a superset of peripheral and coronary modes plus additional parameters that may be of interest in a clinical research environment. The combination mode allows parameters associated with pressure and flow modes to be displayed simultaneously on a single graphical display.

In the illustrative embodiment of the invention, the graphical display interface **110** depicts calculated pressure and flow information on a strip chart graph on a graphical user interface display. The current values are, for example, displayed numerically as well. The graph scrolls as new information is calculated and added. A graphically displayed control enables a user to freeze the scrolling graphs and scroll backwards to view previously displayed portions of the scrolling graph. Additional display methods and techniques will be apparent to those skilled in the art.

The host system **100** embodies an extensible, component-based architecture, and thus the host system **100** supports a virtually limitless number of operating modes for processing and rendering graphical display output corresponding to an extensible set of input signals provided by sensors measuring a variety of types and combinations thereof. The host system **100** is modularized to support receiving and processing signals in a variety of formats from a variety of instruments. In a particular exemplary embodiment of the invention, the host system **100** relies on transducers and external diagnostic instrumentation to: (1) process the raw sensor information rendered by transducers/sensors inserted within a patient and (2) provide the information to the host **100** in particular digital or analog formats. The host system **100**'s capabilities are extendable, by way of example through enhancements to a currently installed peripheral component interconnect (PCI) board **110** or the addition of new PCI boards, to include additional signal processing capabilities. In an exemplary embodiment, transducers on the guide wire (patient isolated) provide low-level signals for blood velocity, flow, and pressure. A standard external pressure transducer (patient isolated) may be integrated with the host system to provide low-level aortic pressure. A high-level ECG signal input to the host provides synchronization for calculations (not patient isolated).

The interface of the host system **100** comprises a number of additional interfaces supporting the transfer and storage of information relating to the operation of the host system. Data storage device **114**, for example, a CD-RW or a DVD-RW drive, is utilized to upload new software and store patient data processed and displayed during a diagnostic/treatment procedure. A network interface **116** provides remote access for performing functions similar to those provided by the data storage device **114**. An audio input **118** enables annotation of input records by a user. A printer **120** facilitates printing out labels and/or compiled data from a diagnostic/treatment procedure. The set of peripheral/interface components identified in FIG. 1 is exemplary. As those skilled in the art will readily appreciate there exist a vast variety of I/O devices that can be advantageously incorporated into the host system **100** to enhance its utility.

Having described the peripheral components and external interfaces of an exemplary host system **100**, attention is now directed to FIG. 2 that depicts an exemplary internal architecture of the host system **100** that facilitates operation of the host **100** in a variety of display modes associated with a variety of sensed invasive cardiovascular parameters such as temperature, pressure and blood flow within an artery. The PCI card **112** represents a highly flexible component of the host system **100** architecture. The PCI card **112** includes a set of external sensor interface circuits for transmitting

power and excitation signals to sensor devices and receiving sensed parameter values illustratively depicted in FIG. 2. In the illustrative example, the PCI card 112 includes both analog and digital input and output signals. Analog output signals are driven by the PCI card 112 output circuitry according to control commands supplied by high level user mode processes executing on the host system 100.

It is noted that a wide variety of sensor types are known and the host system 100 is not limited to any particular type of sensor input. To the contrary, the present host system 100 is intended to provide a broad, extensible, multipurpose platform upon which a wide variety of application-specific modules are capable of processing and displaying sensor data rendered by a variety of sensor types and combinations of the sensor types including those described, by way of example herein.

The PCI card 112 includes a digital signal processor (or DSP) 200 that operates as a special purpose co-processor on the host system 100. The DSP 200 receives digital samples corresponding to signals received via external inputs to the PCI card 112, and carries out appropriate processing (e.g., FFT, filtering, scaling, normalizing, etc.) on the digital/digitized data samples. Thereafter, the processed data is placed into a dual port RAM within the PCI bus interface 202.

Kernel mode drivers 204 executing on the host 100 facilitate communicating commands and data between the PCI card 112 and a set of user mode processes 206 that drive input parameter values for the multiple graphical user interface modes supported by the host system 100. The kernel mode drivers 204 communicate with the PCI bus interface 202 according to a set of methods defined by a PCI Application Program Interface (API) 212. The kernel mode drivers 204 access PCI registers and ports on the PCI bus interface 202 to extract processed sensor data and to issue control commands to the PCI card 112. The kernel mode driver 204 carries out other desired driver functionality including issuing startup and diagnostic commands to the PCI card 112 and enabling and disabling particular inputs and outputs of the PCI card 112. In an embodiment of the invention, the PCI API 212 are sufficiently generalized such that the PCI card 112 can be replaced by a different PCI card that includes a different set of input/output interfaces without requiring replacement of the presently installed kernel mode drivers 204—though reconfiguration may be required to set up new connections between the kernel mode drivers 204 and sources and recipients of data and commands in the PCI interface 202.

The kernel mode drivers 204 also includes functional components that respond to interrupts generated by the PCI card 112 (e.g., data ready, hardware errors, etc.). Other exemplary functions performed by the functional components of the kernel mode drivers 204 include detecting PCI installed devices, retrieving information about installed devices, read/write data from/to PCI configuration registers, execute a single read/write operation to an I/O port or memory on the PCI interface 202, set up interrupt handling, allocate resources, and store sensor device-specific data. The functional driver module 214 responds to new data available for submission to user mode processes (described herein below) responsible for rendering input data that drives the user mode graphical user interface (e.g., graphs, instantaneous parameter values for pressure and flow velocity, etc.).

The user mode level of the host 100 embodies a modular/component based architecture. The modular architecture provides a high degree of flexibility in developing and incorporating new sensor types, and corresponding graphi-

cal user interfaces, into the multimode host user interface. The user mode processes 206 include an extensible COM-based host application 222 that is responsible for presentation of a multiple interface mode graphical user interface (preferably with touch screen functionality). At startup, the host application 222 instantiates a set of user interface mode objects from a registry of available user interface mode object classes. Examples of such user interface mode objects include Pressure, Flow, and Combination. Extension of a base set of graphical user interfaces to include new user interface modes, such as Temperature and pH, is achieved by installing one or more new DLLs containing a user interface mode class objects corresponding to new user interface modes. In an embodiment of the invention, a separate user interface mode component object is provided for each distinct user interface mode supported by the host application 222.

The set of user mode processes 206 also include a set of measurement processing components 224. In an embodiment of the invention, each measurement processing component corresponds to a particular sensor. The measurement processing components 224 are instantiated from a set of sensor-specific component object model (COM) objects provided by one or more dynamically linked library (DLL) files. Each sensor-specific component is executed as a thread within a same process, or alternatively, as a separate process. Thus, a malfunction in one sensor-specific component will not affect the operation of properly operating sensor-specific components. The above-described COM approach to sensor data handling at the user mode level 206 also enables the set of input sensors and corresponding displayed interfaces to be readily extended by installing new DLLs from which the host system 100 instantiates COM objects corresponding to the new sensor input types. The illustrative host system 100 depicted in FIG. 2 includes the following sensor-specific components: pressure 226, flow velocity 228, flow volume 230, temperature 232, and auxiliary 234. An exemplary input processed by the auxiliary component 234 is a position signal rendered by one or more displacement sensors (e.g., a rotational position, a lengthwise position along a vessel). The sensor-specific components are described further herein below. Additional component types of components in the set of measurement processing components 224 (e.g., temperature, pH, etc.) in accordance with alternative embodiments of the host system 100.

In the illustrative embodiment of the invention, the set of sensor-specific components is extensible. Thus, when a new sensor type of sensor is developed for the host system 100, the set of measurement processing components 224 is extended by developing and dynamically incorporating a new sensor-specific component object. Thereafter, integration of the new sensor-specific component object is achieved by properly identifying the object as a member of the class of sensor-specific measurement processing components 224 that are instantiated when the system 100 starts up.

The set of measurement processing components 224 receive sensor data retrieved from the PCI interface 202 and drive inputs to particular ones of the graphical user interface display modes supported by the host application 222. The communications with the kernel mode processes 204 are carried out via a sensor component API 238 which enables the measurement processing components 224 to communicate with an application logic component 240. The sensor component API 238 methods are function oriented. An exemplary set of such methods in the sensor component API 238 include: setting operational states of the sensors, extracting sensor data, issuing control commands to the PCI

card 112 configuring/controlling operation of the sensors. The application logic component 240 translates calls issued by ones of the set of measurement processing components 224 into calls to the kernel mode drivers 204. The application logic component 240 passes sensor data (originating from the PCI interface 202) from the kernel mode drivers 204 to the measurement processing components 224. Communications between the application logic component 240 and the kernel mode drivers 204 accessing the DSP 200 and the PCI interface 202 are carried out in accordance with a digital signal processing (DSP) API 242. The methods of the API 242 are hardware oriented, and include, by way of example: handling an interrupt, writing DRAM, writing DRAM, starting and stopping particular DSP functions relating to particular sensors and/or interfaces.

Having described the general architecture of the host system 100, attention is now directed to the multi-mode graphical user interface supported by the host application 222. It is further noted that the user interfaces preferably are augmented by touch screen functionality. The various display interface modes, while different, preferably share a common look and feel based upon a generic graphical user interface specification. FIG. 3 depicts an exemplary generic graphical user interface specification upon which a set of graphical displays are based in accordance with the various graphical user interface modes supported by the host application 222.

The exemplary graphical user interface architecture consists of three dedicated data display regions. A first region 300 is reserved for display of system and patient information. A second region 302 is reserved for system messages. A third region contains a set of hierarchical screens including a set of functionally related display and interactive components accessed, by way of example, by selection of one of a set of tabs 306.

The first region 300 is persistent and is displayed during all modes of operation of the host application 222. In an embodiment of the invention, the first region 300 includes one or more of the following fields relating to a patient/session: Patient Name, Patient ID—customer specific identification number, Physician—name of the attending physician, Institution—name of the client institution using the system, Date/Time—current date and time, and a branding logo.

The second region 302 of the exemplary graphical user interface general layout is reserved to display system messages. The second region 302 also persists for all modes of operation. The second region 302 includes, by way of example, the following fields relating to the display of messages generated by the host system: Current status—a message indicating the current operation state or status of the unit; Warning events—a message advising the user of a potential problem and possible remedy; Error events—a message notifying the user of a system error and possible corrective action; and System Mode—a message notifying a user of the current mode of operation of the host 100.

A third region 304, by way of example, is reserved to display parameters and input/output data fields according to a current mode of operation of the host 100 and display mode of the host application 222. The third region 304 is not persistent. Rather, the content of the third region 304 is determined by a particular use mode within which the host application is operating. In an embodiment of the invention, the third region 304 operates in one or more of the following modes: System, Pressure, Flow, and Combo (Combination). Additional modes are supported/displayed by the host application 222 in accordance with alternative embodiments of

the host 100. Such additional modes accommodate, for example, displaying additional sensor-provided/derived output parameters (e.g., temperature, pH, etc.) or new sets/combinations of previously existing output parameters display elements. Each mode includes at least a second level of screens once the mode is selected by means of the tabs 306.

Turning now to FIG. 4, an exemplary graphical user interface is displayed that is suitable for entry of patient information in accordance with the System mode of operation of the host application 222. In particular, the displayed graphical display corresponds to a user (patient) data entry sub-screen under the System mode. While the host 100 supports input of data using traditional keyboard, in an embodiment of the invention, the user enters, edits, and/or deletes patient information via a touch screen keyboard called up by selecting the keyboard button 400. Turning briefly to FIG. 5, in response to a user selecting the keyboard button 400, the graphical user interface depicted in FIG. 4 is modified to include a touch screen keyboard 500. Alternatively, keyboard 500 is provided automatically. The information entered will persist for the duration of the current session. The Patient/System Information Display area (the first region 300) reflects changes in corresponding fields.

FIG. 6 comprises an exemplary system sub-screen under the System mode. The user enters relevant system information, e.g., customer/institution name 602, time/data 603, printer 604, LAN connection, local data storage 606, and/or a Doppler audio volume 608. The system sub-screen depicted in FIG. 6 preferably also includes a button/control 610 enabling a user to initiate a system self-test. The user specified information/configuration persists indefinitely and spans multiple patient sessions. The Patient/System Information Area (the first region 300) reflects changes entered via this interface.

FIG. 7 comprises an exemplary system setup sub-screen 700 under the System mode of the host application 222. While the system setup interface enables a user to modify default settings, the new default settings are stored in a non-volatile file, persist indefinitely, and span multiple patient sessions. The default settings are applied on system startup and reapplied via a reset button. As depicted in FIG. 7, the system setup sub-screen includes a new patient button 702 that invokes an interface enabling a user to enter new default setting for a new patient. A save patient study button 704 enables a user to store a session to a persistent device. A recall button 706 invokes an interface enabling a user to review and recall stored sessions. A reset system button 708 when selected, resets system information to default settings. A series of service selection buttons 710 enable a research mode of operation of the host system 100, enable data logging, commence diagnostics on the host 100, and enable selection of parameters displayed. A Cath Lab ID 712 allows the specification of a previously stored particular configuration/setup based, for example, upon a particular catheter lab within which the host 100 is to be used. However, the Cath Lab ID 712 field can be used to recall settings of any particular previously stored configuration/set up of the host 100. A mean period field 714 allows an operator to designate the number of cardiac cycles that are used to calculate a single average value (e.g., Average Peak Velocity).

FIG. 8 comprises an exemplary network communications setup sub-screen 800. In the exemplary embodiment, the sub-screen enables a user to provide information regarding report storage and transfer, connectivity, and format. In the exemplary embodiment a user interfaces to a DICOM (Digital Imaging and Communication in Medicine, an exemplary format for data exchange between two different systems)

11

compliant information management system via the DICOM sub-screen **800** interface of the system mode of the host application **222**. Other services provided by the DICOM sub-screen interface include transferring images to a remote DICOM archive and recalling images from the remote DICOM archive. The fields of the sub-screen **800** include a patient name **802**, an application entity title **804** for specifying the DICOM nodes with which the host **100** communicates, a TCP port field **805** specifies a port through which communications will take place, an Internet protocol address **806** identifying the address of the computer on the network with which the host **100** communicates, local DICOM storage location **808** specifies the local directory where the host **100** stores DICOM files, a browse button **810** launches a well known utility to search within the host **100**'s directory structure or create a new directory, storage file format **812** enables a user to select a file storage format (e.g., DICOM, proprietary, etc.), and a configure button **814** launches configuration of the communications based upon the specified field data.

An exemplary set of interfaces associated with the system (administrative) mode of operation of the host system **100** including the host application **222** has been described. Attention is now directed to a set of diagnostic modes of operation of the host system **100**, and more particularly the display interfaces associated with illustrative pressure, flow and combination modes of operation. With reference to FIG. **9**, the host application **222** includes a pressure mode setup sub-screen **900** that enables a user to specify particular display attributes associated with a display sub-screen (see FIG. **10**). The pressure setup sub-screen **900** preferably provides the user with input features to customize the operation of the pressure mode.

The illustrative pressure mode setup sub-screen **900** includes a set of low and high level input calibration controls **902a** and **902b** enabling a user to calibrate a pressure sensor in a variety of ways. The zero button in the calibration control displays **902a** and **902b** facilitates establishing a zero reference for the pressure sensor and a zero output level reference for any external instruments. Zero level calibration is performed by applying a zero pressure (ambient) and selecting the zero button on the calibration controls **902a** and **902b**. By way of example, low level input calibration is achieved through the low level input calibration control **902a** by applying a low pressure input, setting adjusting the scale value to the input pressure, and then pressing the set button. A high level input calibration is achieved through the high level input calibration control **902b** by applying a high pressure input, setting adjusting the scale value to the input pressure, and then pressing the set button.

Though not shown in FIG. **9**, the low and high pressure calibration is alternatively performed by pressing the button labeled "scale value" to enable calibration by establishing a zero pressure and providing a "slope" or calibration factor defining the relationship between changes to the input pressure and the input signal. The button labeled "scale value" actually toggles the calibration mode, and in response the calibration display **902a** or **902b** converts to a calibration factor mode. Rather than supplying an actual pressure, instead a calibration factor expressed in terms of micro-volts per mmHg is entered by adjusting a displayed value and then pressing the set button.

The pressure mode setup sub-screen **900** also includes a distal input normalization control **903** for normalizing input pressure measurements from a distal pressure sensor via touch screen button controls. Normalization is the matching of the guide wire pressure sensor reading with an aortic

12

pressure. Normalization is achieved by bringing the pressure sensor to an appropriate location and selecting the normalization button. This establishes a new value for the aortic pressure that is used to determine various calculated/displayed output parameter values, including FFR. A distal sensor zero reference is established by selecting the zero button in the distal input normalization control **903** while applying a zero pressure reference.

The pressure mode setup sub-screen **900** also includes a set of venous pressure controls **904** including a venous pressure source control and venous pressure adjust (up/down) controls. A mean venous pressure value enables computing an FFR. The mean venous pressure may be input from a transducer via an external monitor or by a user preset value. Selecting the venous pressure source button on the setup sub-screen **900** toggles the source. Selecting 'External' designates the venous pressure source as a patient-applied transducer through an external monitor. Selecting 'Preset' allows the user to enter an assumed value. Selecting the up/down controls increases/decreases the preset value accordingly. The preferred range of values for the venous pressure is about 0-50 mmHg.

An analog output offset adjust **906** provides an interface for a user to adjust the offset and the pressure high level analog output of the host system **100**. The user can increase or decrease the output via the user interface. The output displays the current output adjustment level via the user interface. The analog output is modified accordingly. Change is effected by selecting the Up/Down arrow buttons adjacent to the Offset Adjust display to increase/decrease the value accordingly. The value will change, for example, in steps of 1 mmHg. The preferred range of values is about -30 to 330 mmHg.

The setup sub-screen **900** also includes maximum/minimum scaling presets **908** for both distal and proximal pressures. An on/off button enables/disables an autoscaling feature of the host graphical output display for the proximal and distal pressures. When autoscaling is activated, the scale of the output display expands as needed to handle an increased range of output pressures. A toggle button displayed in the "adjust" state for both proximal and distal scaling, enables manual adjustment of the maximum and minimum scale values using the up/down arrow buttons. The pressure graph depicted in FIG. **10** in the display sub-screen for the pressure mode reflects the designated scales.

Turning to FIG. **10**, an exemplary pressure mode display sub-screen **1000** displays data and pressure mode controls. The data driving the pressure display is supplied by the pressure component **226** of the set of measurement processing components **224** identified in FIG. **2**. The exemplary pressure mode display sub-screen **1000** includes a pressure waveform graph **1002** including multiple pressure waveforms including distal, venous, and aortic pressure waveforms. A run/freeze control **1004** stops and starts scrolling. A cursor/position control **1006** facilitates searching a waveform. A calculation mode control **1008** includes a first button for selecting a pressure calculation mode (e.g., distal/proximal gradient, distal/proximal ratio, normalized pressure ratio (NPR), and fractional flow reserve (FFR)) and a second button to search for peaks (visible only in FFR mode and used to detect peak hyperemic response after injecting a hyperemic agent). When the calculation mode control **1008** is selected, it changes to a next one of the available types of calculation modes. The exemplary pressure display sub-screen **1000** also includes a set of instantaneous/current measurement digital displays **1010** including: distal pressure, aortic pressure, venous pressure, and a selected calcu-

13

lated value (e.g., distal-to-proximal gradient, distal-to-proximal ratio, NPR, FFR). A print button **1012** initiates printing a set waveforms recorded during a session. Recording of the waveforms is toggled on/off by means of the record button **1014**.

In the illustrated display, gradient calculation mode has been selected. In an exemplary embodiment, a gradient output is measured by taking a difference between pressures before (e.g., aortic) and after a partially blocked vessel. The distal-to-proximal ratio is calculated by dividing the distal pressure by the proximal pressure. The normalized pressure ratio is calculated by subtracting the venous pressure from the distal and proximal pressures and then taking their ratio. The FFR value is calculated by taking the normalized pressure ratio at the peak hyperemic response. Pressure gradients/ratios across a heart valve are also provided in association with yet another potential calculated value rendered by the host **100**.

Next, an exemplary set of user interfaces are shown depicted that are associated with a flow mode of operation of the host **100** and host application **222**. The flow mode graphical user interface is subdivided into a number of sub-screens illustratively depicted by way of example herein. With reference to FIG. **11**, a setup screen **1100** provides the user with interface setup features to select and customize the operation of the flow mode of operation of the host **100**. The flow setup includes controls to set for example: Doppler audio volume and balance **1102**—for a set of stereo speakers, a signal threshold **1104**—via an on/off button and a threshold adjust, and velocity range **1106**—similar to pressure in that a user can select either auto ranging or manually adjust the maximum on the scale in the case where the auto ranging is shut off. A configuration button **1108** toggles between coronary and peripheral artery configurations to take into consideration the delay of velocity changes in relation to an ECG signal.

Trend setup controls **1110** set velocity scale and time base scale for a trend output. Furthermore, the trended parameter, average peak velocity or diastolic/systolic velocity ratio, is selected via the trend setup controls **1110**. Other exemplary controls for the flow display mode include a sweep speed **1112** (selects the scrolling speed of the spectral display from 3 speeds: slow, medium, or fast), zero offset **1114** (selects the zero velocity baseline position from 3 locations: low, medium, or high), and a flow direction **1116** (select the direction of flow to be displayed above the baseline from 2 bearings: antegrade or retrograde). A user can also optionally designate whether to display a blood pressure trace **1118**, ECG trace **1119**. A user also selectively activates a noise filter **1120**. A calibration section **1122** allows a user to enable/disable an output calibration signal and select the particular waveform for performing the calibration.

With reference to FIGS. **12a-e**, a set of illustrative examples of a flow display are provided in accordance with two primary flow sensing configurations, coronary and peripheral—as designated by the configuration button **1108** on the flow setup sub-screen depicted in FIG. **11**. A flow operation sub-screen **1200** is displayed in its depicted state when a CFR operation button **1201** button is selected. In response, a multi-partitioned waveform display depicts a full wave form graph **1202** as well as two smaller waveform display output segment graphs **1204** and **1206** corresponding to the base waveform and peak wave form (under hyperemic conditions). The designation of the time frame in which data is gathered and displayed within the graphs **1204** and **1206** is determined by pressing the base/peak button

14

1208 a first time to acquire the base readings and then pressing the base/peak button **1208** a second time to acquire the peak readings.

The graphs **1202**, **1204** and **1206** display flow velocity (based upon flow velocity input data in the form of Doppler spectral arrays), measured in a variety of ways (e.g., average peak velocity, mean peak velocity and flow velocity). At each point in time, a set of grayscale values are assigned to each representative frequency component of the display. Intensity is assigned to points along a same time slice on the graph based upon prevalence of the frequency indicative of blood flow velocity. The display generates a set of markers associated with particular sensed events. For example, the “S” represents the systolic pressure reading while the “D” represents the diastolic pressure reading in a cardiac cycle. A user can limit the displayed spectra by adjusting the threshold background **1104** to exclude low level frequency components. Simultaneous with the velocity spectra, an instantaneous peak velocity tracking the blood flow velocity envelope’s peak may also be displayed.

In the illustrative embodiment, instantaneous/current calculated values for graphed parameters are digitally displayed as well in field **1210**. In particular, field **1210** displays the instantaneous heart rate, average peak velocity (APV), and diastolic/systolic velocity ratio (DSVR). Additional sub-fields of field **1210** depict the APV and DSVR determined during a designated base time span and peak time span. Field **1210** also displays the CFR calculated from the base and peak values. An optimal wire position indicator **1212** visually prompts a user to move the wire to obtain optimal placement positioning. A run/freeze button **1214** starts and stops scrolling of the displayed waveforms, and a cursor **1215** allows scrolling within the previously displayed sections of the waveforms. A print button **1216** enables the printing of the waveforms. A record button **1218** toggles a data/waveform recorder between an active/inactive logging state.

Having described an exemplary interface associated with the CFR flow mode, attention is briefly directed to other coronary modes supported by the exemplary host system **100**. FIG. **12b** depicts the display of the host system **100** when a user selects the proximal/distal button **1220** while in the coronary flow configuration. Instead of the base/peak button **1201**, a proximal button **1222** and a distal button **1223** are displayed.

The proximal button **1222** is selected to invoke pressure input processing by the host system **100** corresponding to a pressure observed proximal (before) a stenosis. The corresponding waveform is displayed upon a graph **1224**. The distal button **1223** is selected to invoke pressure input processing corresponding to a pressure observed distal (after) a stenosis. The corresponding waveform is displayed upon a graph **1226**.

The output display depicted in FIG. **12b** includes instantaneous/current calculated values for graphed parameters in field **1228**. In particular, field **1228** displays the instantaneous heart rate, average peak velocity (APV), and diastolic/systolic velocity ratio (DSVR). Additional sub-fields of field **1228** depict the APV and DSVR determined for proximal and distal pressure readings. Field **1228** also displays the proximal/distal ratio calculated by the host **100** from the observed proximal and distal pressures.

FIG. **12c** depicts a graphical output display rendered in accordance with trend calculations supported by the host system **100**. When the trend operation is selected, the host system **100** calculates an average flow velocity value (e.g., APV, DSVR, etc.) over a period of time (e.g., a cardiac

15

cycle) and visually renders the value in the form of a graph **1230**. The trend mode is entered when a user selects a trend button **1231**. In response, an APV button **1232** and a DSVR button **1234** are displayed. Based upon a user's selection, the calculated and displayed average is either an APV or a DSVR. It is noted that the above two trend parameters are merely exemplary as those skilled in the art will readily appreciate that other input/calculated are suitable for trend calculation, display and analysis.

With continued reference to FIG. **12c** a set of instantaneous/current calculated values for graphed parameters are digitally displayed in field **1236**. The output parameters displayed in field **1236** are the same as the ones depicted in field **1210** in FIG. **12a**. However, the BASE, Peak and CFR parameters are not calculated by the host **100** while trend analysis is occurring. Rather, these parameters are retrieved, if they exist, from previous calculations rendered when the user selects the CFR button **1201**. The base value is marked in the trend graph **1230** with a "B", the peak value with a "P", and the starting point of the peak search with an "S". The time scale of the trend graph **1230** is on the order of one or multiple minutes. The time scale of the ECG graph above the trend graph is on the order of seconds.

Turning now to FIGS. **12d** and **12e**, graphical display outputs are illustratively depicted for two exemplary peripheral operations supported by the host **100**. These two sub-screens of the flow mode graphical display **1200** are entered by selecting the peripheral configuration through the coronary/peripheral configuration button **1108** on the flow setup sub-screen depicted in FIG. **11**. The peripheral configuration takes into account that, in peripheral arteries, a flow velocity signal lags an ECG signal, and therefore the peripheral configuration introduces a time shift to account for the lag.

FIG. **12d** illustratively depicts the display **1200** when the ratio button **1240** is selected while the host system **100** is in the peripheral flow configuration. A graph **1242** displays a continuous graph depicting calculated flow velocity. A base flow velocity graph **1244** is rendered from data collected by the host system **100** after a base/peak button **1246** is selected a first time. A peak flow velocity graph **1248** is rendered from data obtained after the base/peak button **1246** is selected a second time.

In the illustrative embodiment, instantaneous/current calculated values for graphed parameters are digitally displayed as well in field **1250**. In particular, field **1250** displays the instantaneous heart rate, APV, and mean peak velocity (MPV). Additional sub-fields of field **1250** depict the APV and MPV determined during a designated base time span and peak time span. Field **1250** also displays a ratio calculated from the base and peak values.

FIG. **12e** illustratively depicts the display **1200** when the trend button **1252** is selected while the host system **100** is in the peripheral flow configuration. The two snapshot graphs **1244** and **1248** are replaced by a single trend graph **1254**. In the illustrative embodiment, instantaneous/current calculated values for graphed parameters are digitally displayed as well in field **1256**. In particular, field **1256** displays the instantaneous heart rate, APV, and mean peak velocity (MPV). Additional sub-fields of field **1256** depict the APV and MPV determined during a designated base time span and peak time span. Field **1256** also displays a ratio calculated from the base and peak values. However, the displayed Base, Peak and ratio values in field **1256**, are provided from the previously described ratio operation described with reference to FIG. **12e**.

Yet another exemplary mode of the multiple interface modes is a combination mode that provides data from

16

multiple sensors in a single graphical interface. In the illustrative example, no new signal input types are needed to carry out the illustrative combination type of graphical display interface. In alternative embodiments, the combination mode includes additional sensor input types such as, for example, a temperature input or a position sensor. FIG. **13** provides an exemplary combination mode display in which flow and pressure measurements are combined to render two side-by-side scrolling graphs depicting sensed flow and pressure parameters during an invasive diagnostic procedure wherein a flexible elongate member such as a guide wire, configured as a combination device (in this particular case including both a pressure sensor and a Doppler flow sensor) is inserted into a patient. Such combination devices, used in association with the combination output provide a desirable environment in which to calculate fractional flow reserve (FFR) using pressure readings, and coronary flow reserve (CFR) using flow readings. However, it is possible to utilize the present system to make CFR and FFR measurements using non-combination devices, i.e. using multiple known single sensor devices.

Referring now to FIG. **13**, the combination mode display screen **1300** includes a first graph **1302** of sensed pressure and a second graph **1304** of flow output parameters such as, for example, Doppler spectral arrays, average peak velocity and flow volume. Digital displays are provided that illustratively indicate instantaneous measurements for distal pressure **1306**, a pressure calculation (based upon selected calculation via button **1316**) such as gradient pressure **1308** (but also displays FFR or other calculated pressures), heart rate **1310**, average peak flow velocity **1312** and mean peak flow velocity **1314**.

A CFR/Trend button **1320** provided a user the capability of selecting a CFR operation or trend operation in association with the acquisition of flow data. A flow velocity button **1321** enables selection of a flow velocity output mode. As disclosed previously in FIGS. **10** and **12a-e** the screen **1300**, in an embodiment of the invention, reconfigures in association with a user's selection of the various selectable operations and calculations supported by the combination mode of the host **100**.

The combination screen **1300** also preferably includes scroll controls in the form of scrolling arrows **1322** that enable a user to scroll forward and back along the graphical output. A freeze/run toggle button **1324** enables/disables scrolling of the graphs **1302** and **1304**. A print button **1326** initiates printing a session (or portion thereof). A record button **1328** commences and halts recording session data in a toggling manner.

In addition to the touch screen controls, the host **100** preferably supports interactive remote control/selection of the various display components depicted in the exemplary graphical user interface displays described herein above.

Having described a set of exemplary graphical user interfaces associated with a host system **100** embodying the present invention, attention is directed to FIG. **14** which depicts a flowchart summarizing an exemplary set of steps for carrying out a coronary flow reserve (CFR) measurement. Initially, a user selects the flow interface mode of the host application **222**. Thereafter, during step **1400** the user presses the CFR button **1201** on the display screen to measure CFR. In response during step **1402** the graph area of the screen **1200** vertically partitions into upper and lower halves. The upper half graph **1202** displays the real-time velocity spectra presently measured by the Doppler sensor. The lower half of the graph display area is divided horizontally into two sections for displaying snapshots of the

17

spectral display taken from the upper partition. The lower left area contains baseline graph **1204**, and the lower right area is reserved for a peak response graph **1206**.

During step **1404**, a user presses the BASE/PEAK button **1208** on the display **1200** to save the baseline spectral display. A snapshot of the real-time spectral display is transferred to the lower left (baseline) graph **1204** of the display during step **1406**.

Next, at step **1408** a hyperemic agent is injected into the patient. At step **1410** the BASE/PEAK button **1208** is selected a second time. In response, at step **1412** the host application **222** automatically begins a search for a peak hyperemic response (maximum average peak velocity (APV)—where the APV is determined by averaging the instantaneous peak velocity (IPV) over a cardiac cycle). During step **1414** a snapshot of the real-time spectral display is transferred to the lower right (peak) area on the graph **1202**. During steps **1416** and **1418** the CFR ratio is periodically recalculated based upon the maximum APV found during the search and the current maximum ratio is displayed digitally in field **1210**. Pressing the BASE/PEAK button **1208** a third time manually terminates the search. The search is automatically terminated if 5 consecutive seconds have elapsed and the maximum APV has not changed. The last CFR ratio value is held in the display as the process for determining the CFR ratio ends.

Turning now to FIG. **15**, an exemplary set of steps for carrying out a fractional flow reserve (FFR) determination using the host system **100** in a pressure mode and a guide wire including a pressure transducer is summarized. Initially, during step **1500** the FFR mode is selected via the calculation mode button of the calculation mode control **1008**. A blood pressure sensor is placed in position to measure distal pressure within a vessel. Aortic pressure is simultaneously monitored using an aortic pressure sensor. Thereafter, during step **1501** or **1502** (based upon the specifically selected FFR mode—intracoronary or intravenous) the hyperemic agent is either injected in the blood vessel under investigation or administered intravenously. The peak search button of the calculation mode control **1008** (displayed only for FFR mode) is selected to observe the hyperemic response of the vessel during step **1504**. The host application **222** displays a “searching” prompt at step **1506** until it locates a peak response while carrying out a search during step **1508**. When the peak is detected, the FFR value is displayed during step **1510** on the display **1000**.

The pressure mode of operation of the host application **222** preferably also supports determination of a proximal/distal ratio. The set of exemplary steps for such a procedure are depicted in FIG. **16**. Initially during step **1600** the P/D mode is selected via the calculation mode button of the calculation mode control **1008**. This results in a split screen similar to the one described above for the CFR ratio determination process summarized in FIG. **14**. Next, at step **1602** after moving a pressure sensor to a proper location within a vessel to obtain a proximal pressure reading, a user selects a proximal button that is displayed when the ratio calculation operation is selected. In response, during step **1604** the host application **222** stores the current proximal image in the lower left quadrant of the graph **1002** (in a split screen similar to the one displayed for CRF operations). Next, a pressure sensor of the guide wire is moved to a point beyond (distal to) a stenosis during step **1606**. At step **1608** a distal display button rendered within the calculation mode control **1008** area is selected on the graphical display screen **1000**. In response, during step **1610** the host application **222** stores the current distal image in the lower right quadrant of the

18

graph **1002**. At step **1612** the proximal/distal pressure ratio is calculated based upon the stored inputs at steps **1604** and **1610**, and during step **1614** the P/D ratio is displayed on the display **1000**. It is noted that the ordering of taking the proximal and distal readings is not important to carry out the P/D ratio determination. In fact, in a system wherein two pressure sensors are simultaneously placed in proper locations to take the proximal and distal readings, the readings are taken at substantially the same time.

Having described a number of exemplary applications of the host system **100** and its multipurpose, multimode architecture the breadth of potential configurations/applications of this architecture is demonstrated through two additional uses that involve the incorporation of a sensor orientation/displacement signal and a temperature sensor signal received by the PCI card **112** of the host system **100**. The host system **100**, for example, receives pressure sensor signals and a sensor displacement signal enabling the host system **100** to render a map of pressure variations along a vessel. The resulting substantially real-time graphical display can be used, for example, to locate a stenosis or guide optimal placement of treatment of a vessel blockage. In yet another application supported by the host system **100**, a position sensors identifying angular displacement as well as displacement along the length of a vessel are integrated, by the host system, with a temperature sensor mounted upon a flexible elongate member to provide a temperature map for the walls of a vessel to identify lesions. Such map is created by the host system **100** by rotating a temperature sensor placed against the vessel wall and drawing the temperature sensor back along the vessel. The host system **100** receives and integrates the signals provided by the temperature and position sensors and renders a corresponding map.

Illustrative embodiments of the present invention and certain variations thereof have been provided in the Figures and accompanying written description. Those skilled in the art will readily appreciate from the above disclosure that many variations to the disclosed embodiment are possible in alternative embodiments of the invention. Such modifications include, by way of example, modifications to the form and/or content of the disclosed functions and functional blocks of the disclosed architecture, the measurements processed by the host system, the calculations arising from the measurements, the methods for setting modes and acquiring the measurements. Additionally, imaging data, such as Intravascular Ultrasound, Magnetic Resonance Imaging, Optical Coherence Tomography, etc., may be obtained, analyzed, and/or displayed upon the multipurpose application interface supported by the host system described hereinabove. The present invention is not intended to be limited to the disclosed embodiments. Rather the present invention is intended to cover the disclosed embodiments as well as others falling within the scope and spirit of the invention to the fullest extent permitted in view of this disclosure and the inventions defined by the claims appended herein below.

What is claimed is:

1. A multipurpose host system for invasive cardiovascular diagnostic measurement acquisition and display incorporating a component based arrangement, the system comprising:
 - a) an external input signal bus interface for receiving data arising from cardiovascular diagnostic measurement sensors;
 - b) a plurality of measurement processing components, that operate at a user mode level in the multipurpose host system, for facilitating receiving data of particular sensor types and rendering diagnostic measurement parameter values according to the received data;

19

a multi-mode graphical user interface host comprising diagnostic measurement user interfaces including display components corresponding to data output rendered by specified ones of the plurality of measurement processing components; and

one or more kernel mode drivers that extract processed sensor data from as, peripheral interface card providing a hardware interface for one or more invasive diagnostic measurement devices.

2. The multipurpose host system of claim 1 wherein the plurality of measurement processing components includes a blood pressure processing component and a blood velocity processing component.

3. The multipurpose host system of claim 2 wherein the plurality of measurement processing components includes an invasive device position sensor processing component.

4. The multipurpose host system of claim 2 wherein the diagnostic measurement user interfaces include a pressure measurement display interface wherein a ratio of a first measured pressure and a second measured pressure is rendered.

5. The multipurpose host system of claim 2 wherein the diagnostic measurement user interfaces include a pressure measurement display interface wherein a pressure gradient between a first measured pressure and a second measured pressure is rendered.

6. The multipurpose host system of claim 2 wherein the diagnostic measurement user interfaces include a flow measurement display interface wherein a ratio of flow velocity under high flow conditions and low velocity conditions is rendered.

7. The multipurpose host system of claim 1 wherein the plurality of measurement processing components includes a temperature processing component and an invasive device position sensor processing component.

8. The multipurpose host system of claim 1 wherein the multi-mode graphical user interface host includes a first display interface made wherein blood pressure measurements are displayed and a second display interface mode wherein blood flow measurements are displayed.

9. The multipurpose host system of claim 8 wherein the multi-mode graphical user interface host further includes a third display interface mode graphically depicting a combination of display elements including one or more pressure measurement display elements from the first display interface mode and one or more flow measurement display elements from the second display interface.

10. The multipurpose host system of claim 1 wherein the plurality of measurement processing components are instantiated from component objects.

20

11. The multipurpose host system of claim 1 wherein the multi-mode graphical user interface host supports the set of diagnostic measurement user interfaces through a generic graphical interface specification.

12. The multipurpose host system of claim 11 wherein the generic graphical interface specification includes:

- a patient information display region; and
- a mode-specific data display region including graphical display components corresponding to data output rendered by specified ones of the measurement processing components associated with a current display mode.

13. The multipurpose host system of claim 12 wherein the generic graphical interface specification includes a first set of tabs for selecting one of a set of supported display modes, wherein each supported display mode includes a specified set of graphical display components rendered in the mode-specific data display region.

14. The multipurpose host system of claim 13 wherein a mode-specific display region displays a second set of display-mode specific tabs corresponding to a set of displays associated with a display mode corresponding to a selected one of the first set of tabs, thereby facilitating a hierarchical arrangement of supported graphical displays within the mode-specific display region.

15. The multipurpose host system of claim 12 wherein a pressure display mode supports rendering a fractional flow reserve value.

16. The multipurpose host system of claim 11 wherein the generic graphical user interface specification includes a touch screen interface for selecting display components.

17. The multipurpose host system of claim 16 wherein a touch screen keyboard is supported by the generic graphical user interface specification.

18. The multipurpose host system of claim 1 further including a sensor component application interface through which the measurement processing components issue requests to the kernel mode drivers.

19. The multipurpose host system of claim 1 wherein the plurality of measurement processing components includes a temperature processing component and a blood pressure processing component.

20. The multipurpose host system of claim 12 wherein the generic graphical interface specification includes a system message display region.

* * * * *